

BTeV Pixel Silicon Detector

Test beam results 1999-2000

J.A. Appel, J.N. Butler, G. Cardoso, H. Cheung, G. Chiodini,
D.C. Christian, E.E. Gottschalk, B.K. Hall, J. Hoff, P. A. Kasper,
R. Kutschke, S.W.Kwan, A. Mekkaoui, R. Yarema,
and S. Zimmermann

Fermi National Accelerator Laboratory

C. Newsom - University of Iowa

A. Colautti, D. Menasce, and S. Sala - INFN(Milan)

R. Coluccia and M. Di Corato - Universita' di Milano

M.Artuso and J.C. Wang – Syracuse University

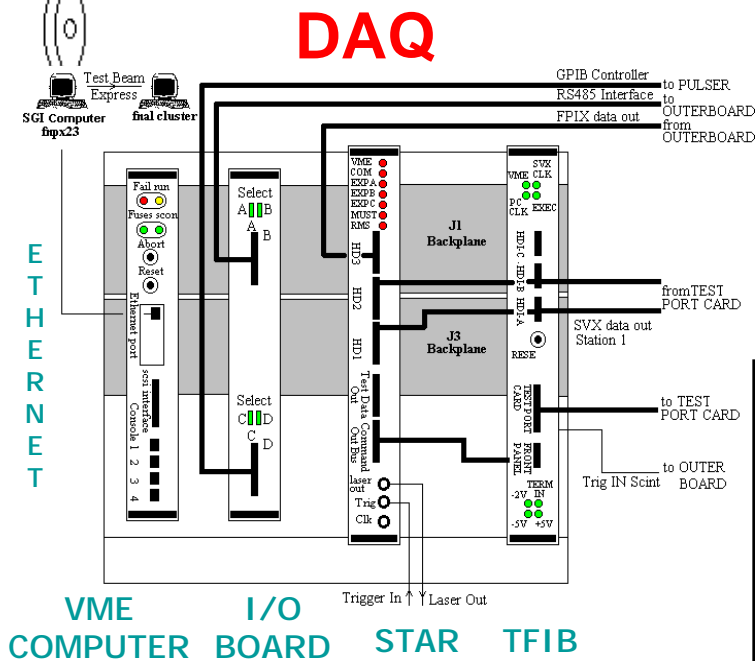
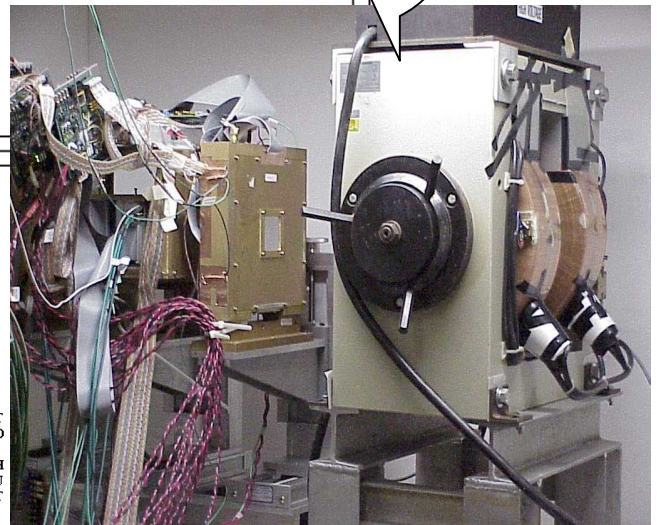
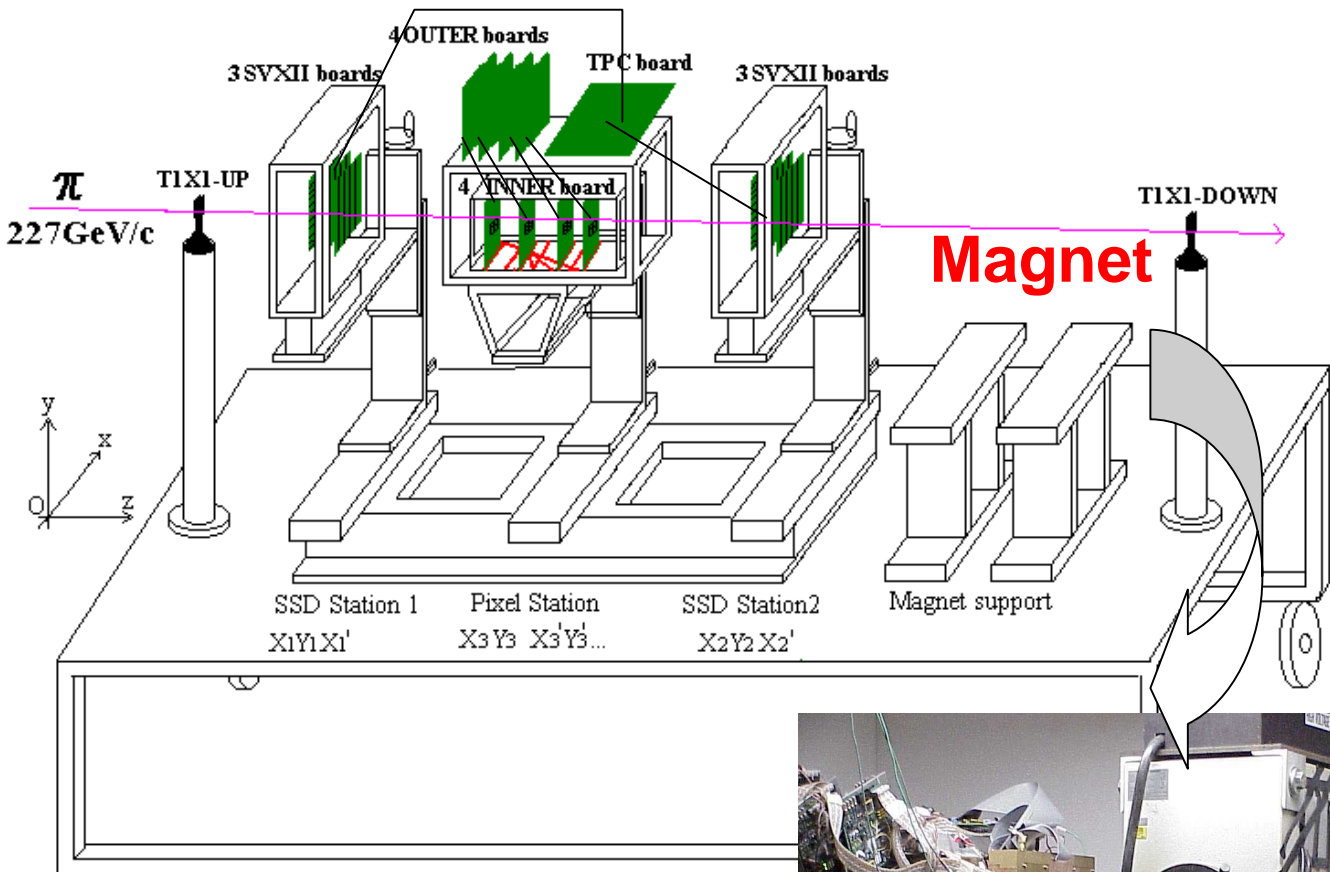
Talk given by G. Chiodini – Fermilab

Genova - Pixel 2000 - June 5-9, 2000

Overview

- Test beam setup
 - SSD telescope and DAQ
 - 5 pixel planes tested
- Test beam results
 - Pixel Calibration
 - Charge collection
 - Charge-sharing
 - Spatial resolution
- Four plane pixel telescope
- Conclusions

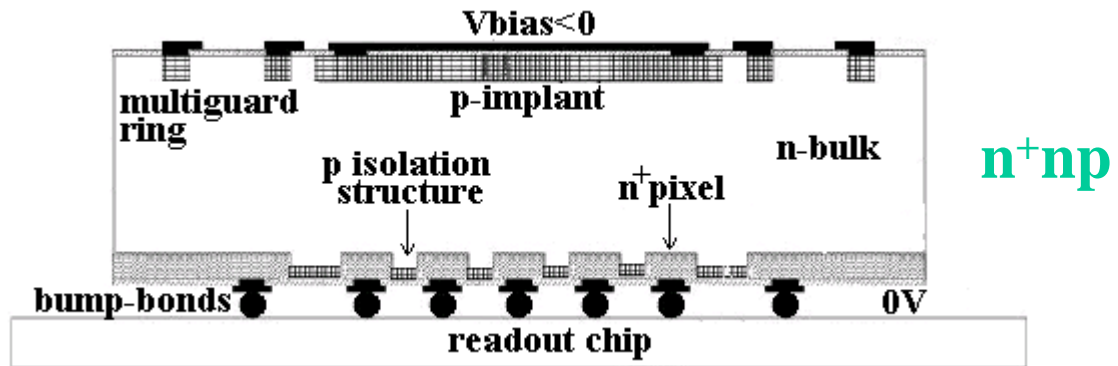
Setup: SSD telescope and DAQ



- I/O Board
 - Controls and Initializes 4 pixel readout chips
 - GPIB controller: HV, thresholds and pulser
- Automatic pixel calibration

Setup: 5 pixel planes tested

Samples of FPIX0 and FPIX1 readout chips bump-bonded to ATLAS sensor prototypes

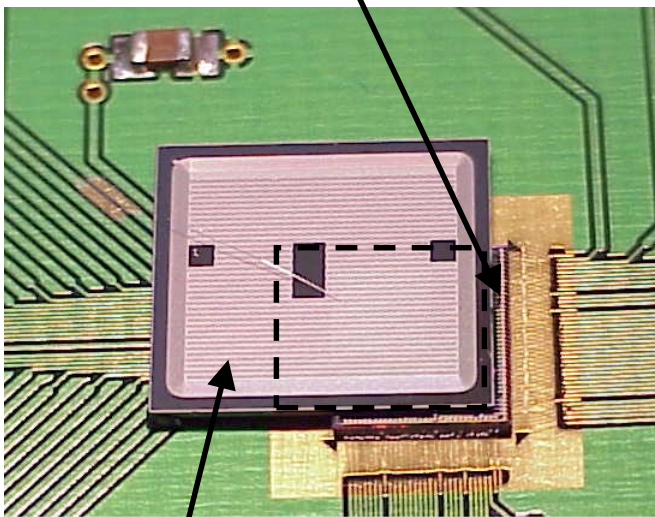


indium bump-bonding

50x400 μm^2 cells

FPIX0 64x12cells

8 bit external ADC

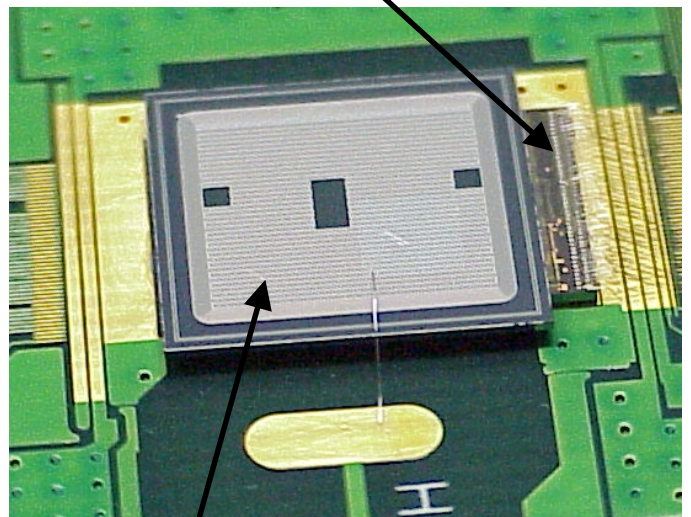


- ST1-CiS p-stop
- ST2-CiS p-spray

Bonded active area 3.2x4.4mm²

FPIX1 160x18cells

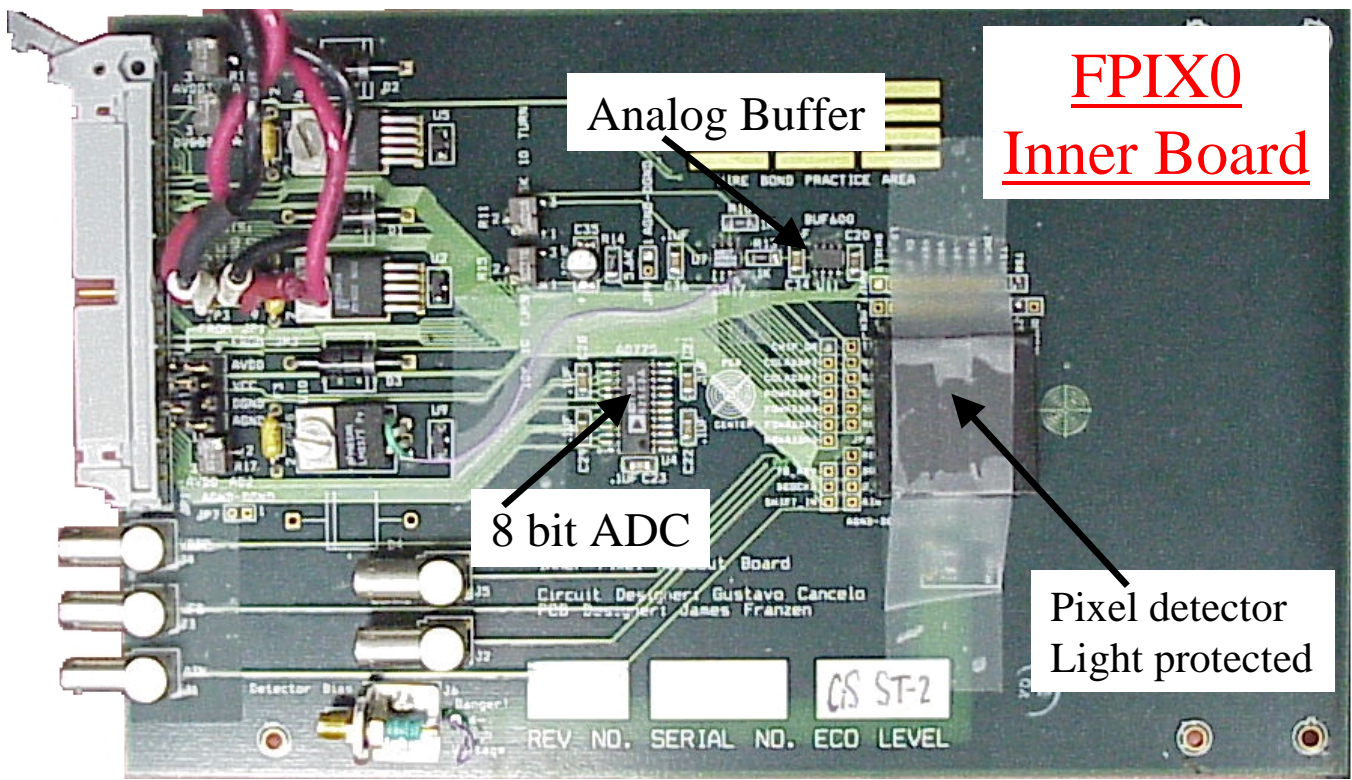
2 bit internal FADC



- Two ST1-Seiko p-stop
- ST2-Seiko p-spray

Bonded active area 8x6.8mm²

Setup: 5 pixel planes tested

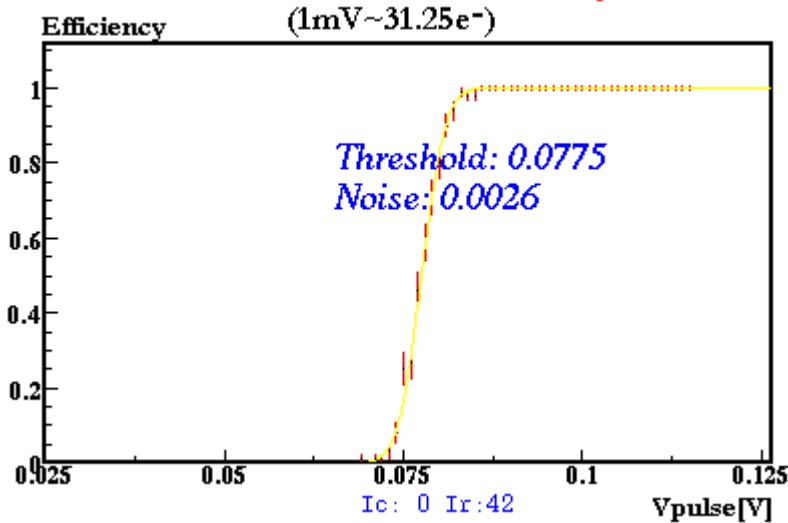


Results:

pixel calibration - *pulse generator*

FPIX0 bump-bonded to ST1 CiS p-stop

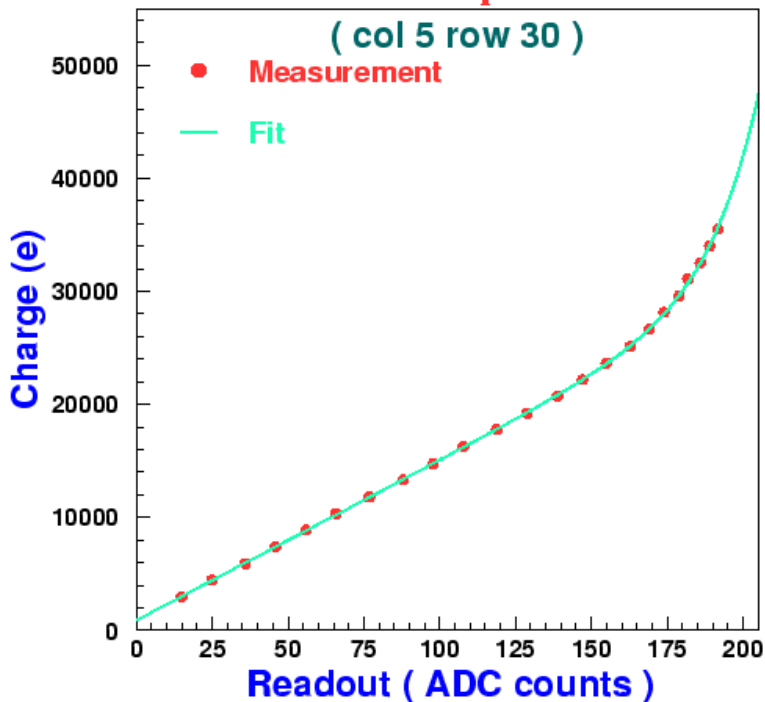
Discriminator Efficiency Curve



$$Q_{th} = 2500 \pm 400 e^{-}$$

$$Q_{noise} = 106 \pm 13 e^{-}$$

ADC response



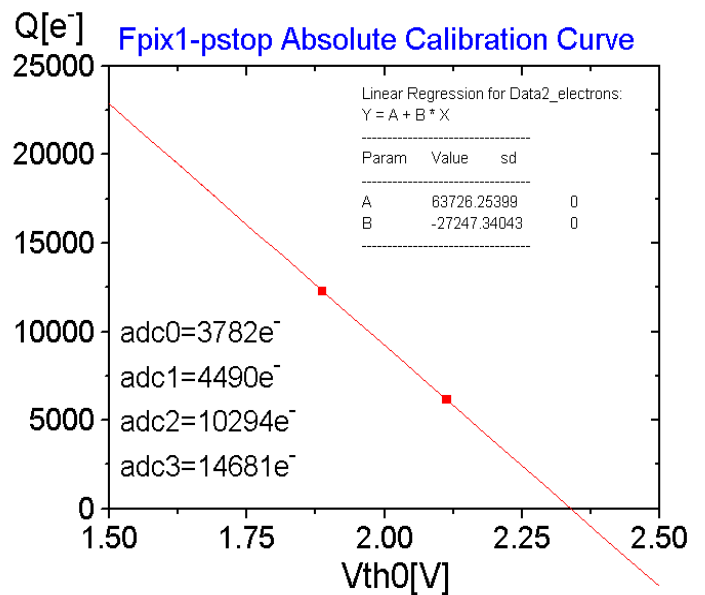
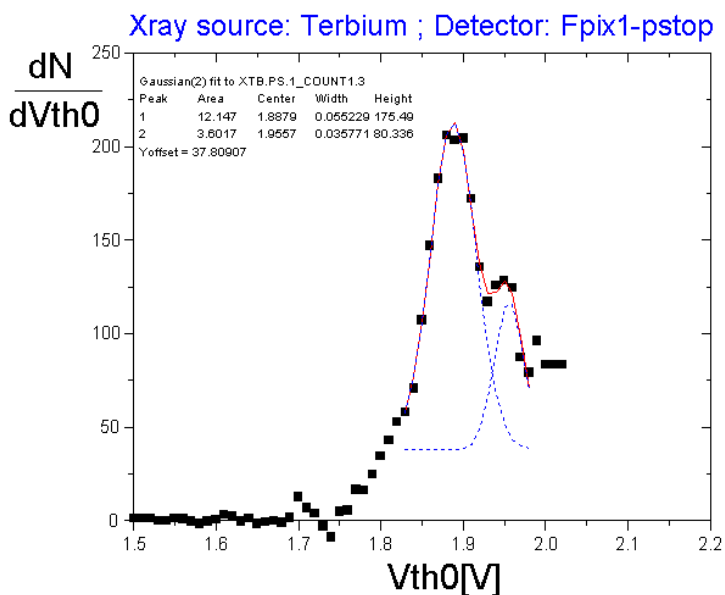
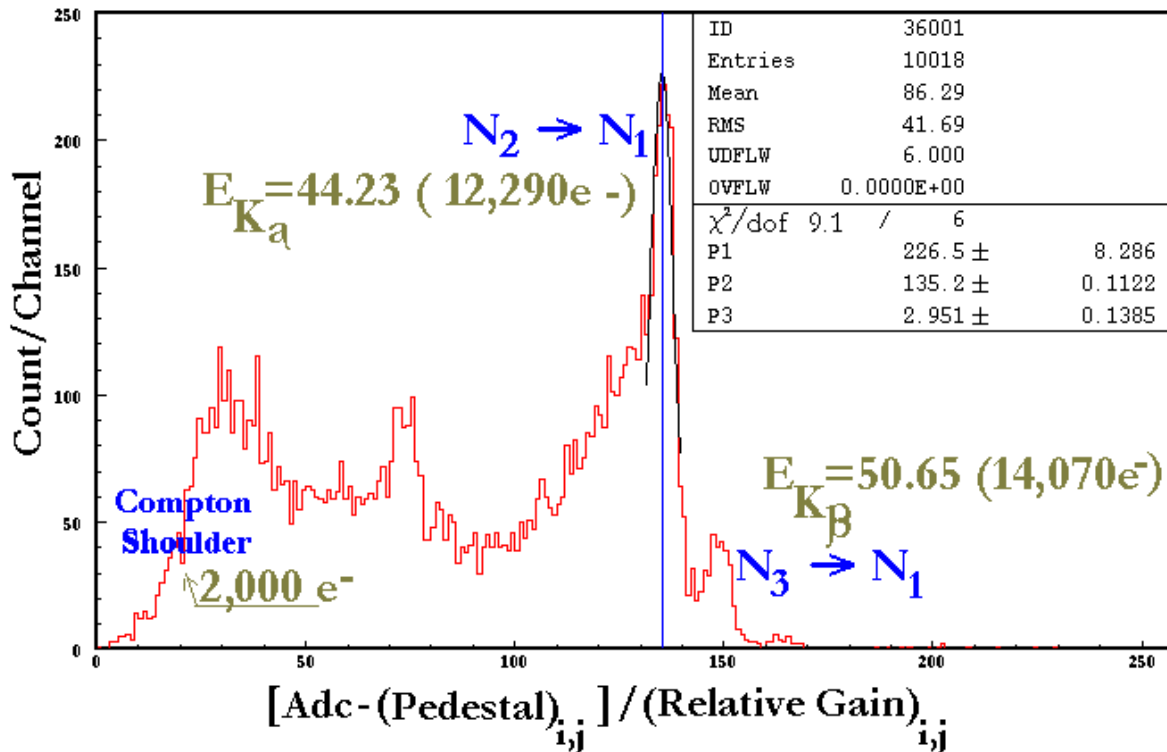
$$Q_{noise,ADC} = 400 \pm 96 e^{-}$$

Dynamic range ≤ 1.5 MIP

Results: Pixel calibration - *X ray sources*

Xray Peaks of an Activated Terbium Foil

FPIX0 bump bonded to a p_spray sensor

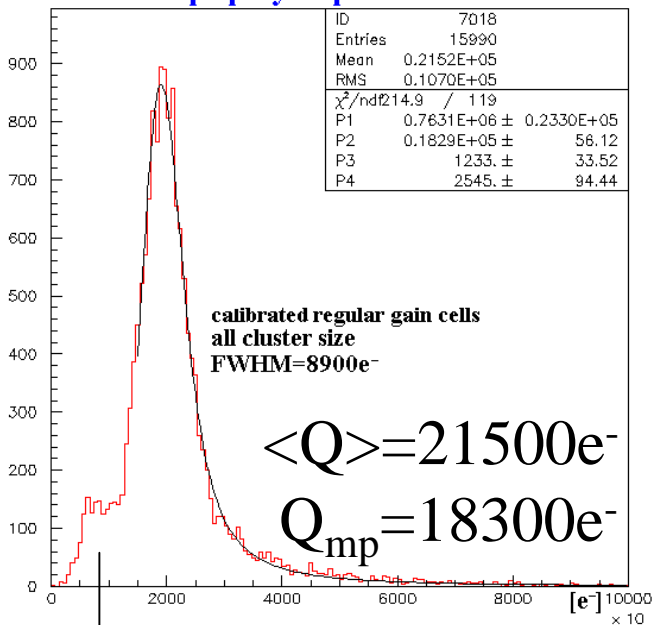


Vth0 = Threshold knob

Results: Charge collection

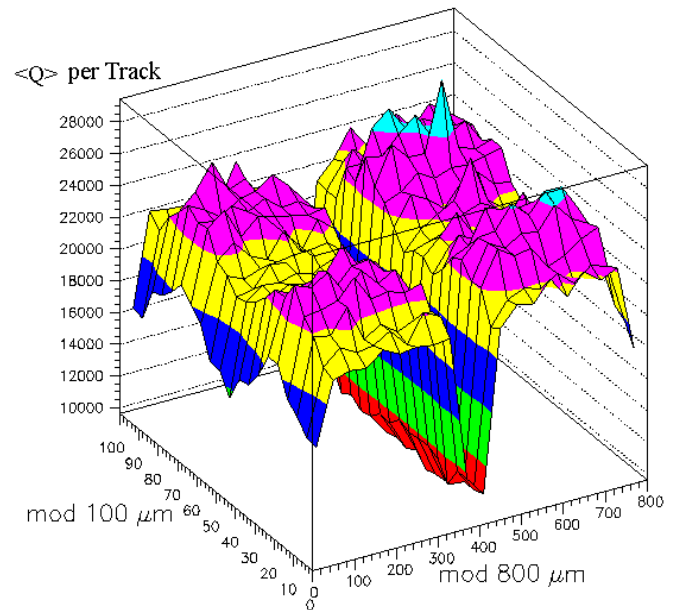
Single chip CiS p-spray

a) **FPIX0 p-spray improved Landau fit**



Charge losses

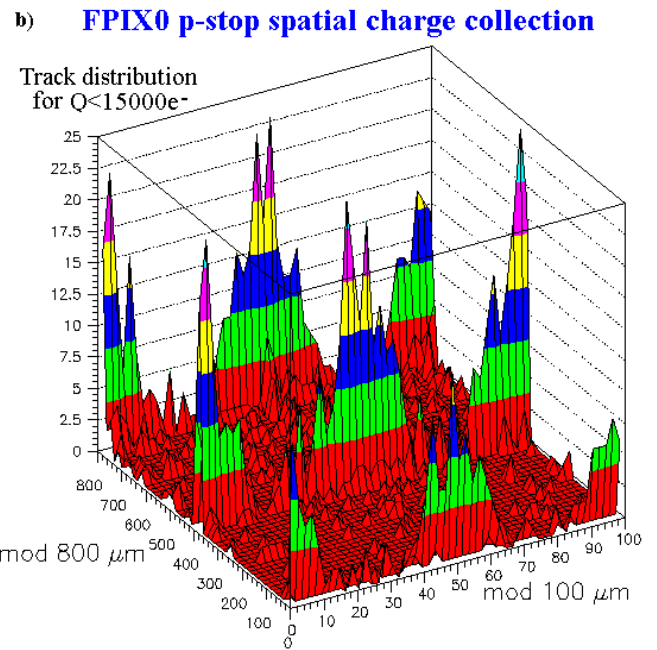
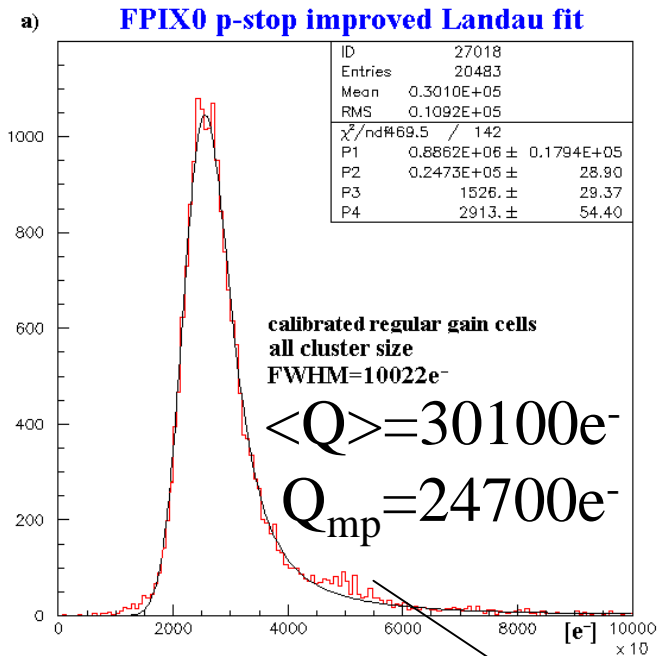
b) **FPIX0 p-spray spatial charge collection**



Charge losses not intrinsic to the p-spray technology but a feature of this particular sensor design.

Results: Charge collection

Single chip CiS p-stop



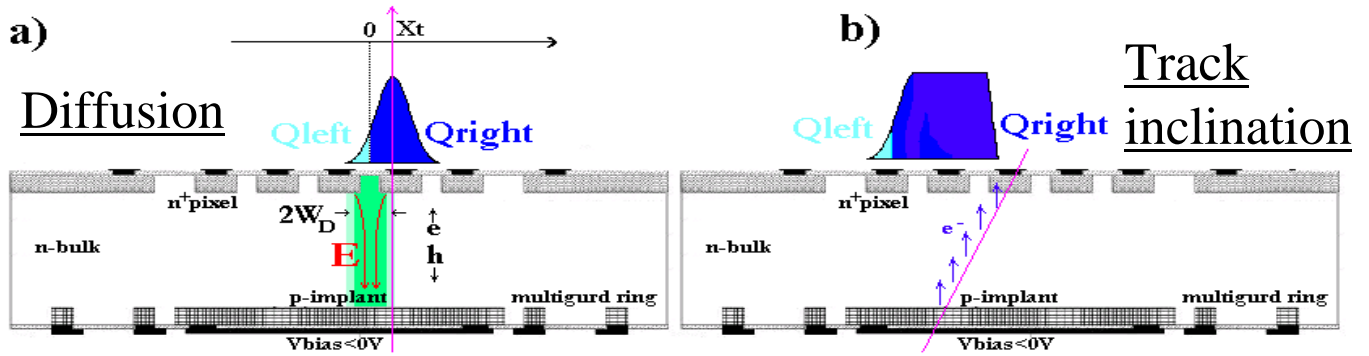
Saturation bump for CS=1

- The Landau distribution convoluted with a Gaussian function fit well the charge distribution.

$$f(E) = N \int dE' e^{-\frac{(E-E')^2}{2\sigma_g^2}} \frac{\phi\left(\frac{E'-E_{MP}}{\xi} + \lambda_0\right)}{\xi}$$

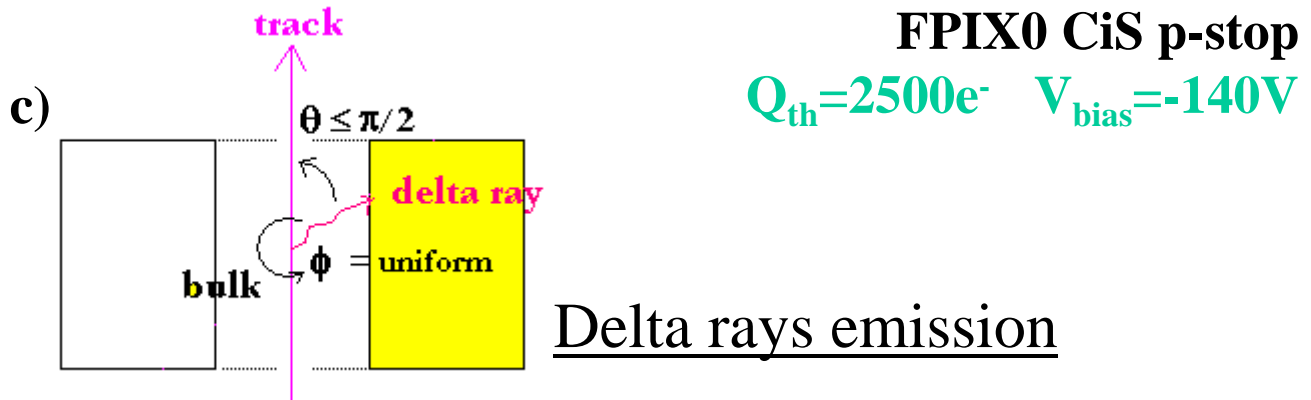
- Only less than 0.7 % of the events have a signal less than 15000 e⁻.

Results: charge-sharing



Relative fraction of cluster sizes (CS)

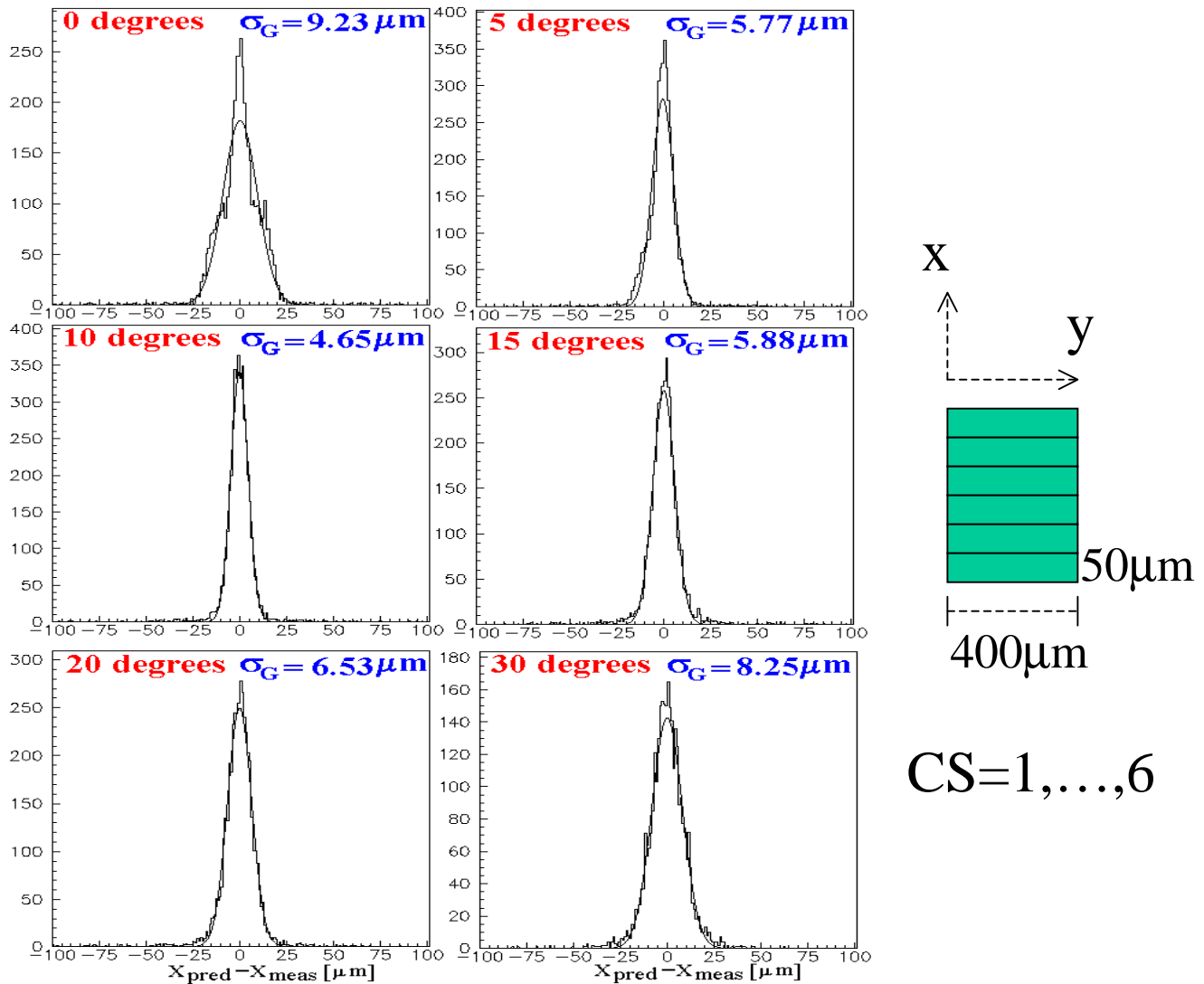
Angle [degs]	CS=1	CS=2	CS=3	CS=4	CS=5	CS=6
0	.639	.328	.017	.009	.0034	.0025
5	.433	.527	.022	.010	.0041	.0028
10	.090	.846	.040	.015	.0055	.0029
15	-	.635	.332	.022	.0080	.0034
20	-	.209	.741	.031	.0124	.0060
30	-	-	.178	.769	.041	.0115



Results: spatial resolution

Gaussian fit residual distribution

ST1 CiS FPIX0 detector



- X_{pred} = projection of the kalman fit on the plane using all the planes, BUT the one under test ($\sigma_{\text{pred}} = 2.1 \mu\text{m}$) .
- X_{meas} = coordinate measured by the plane under test using the head-tail analog interpolation.

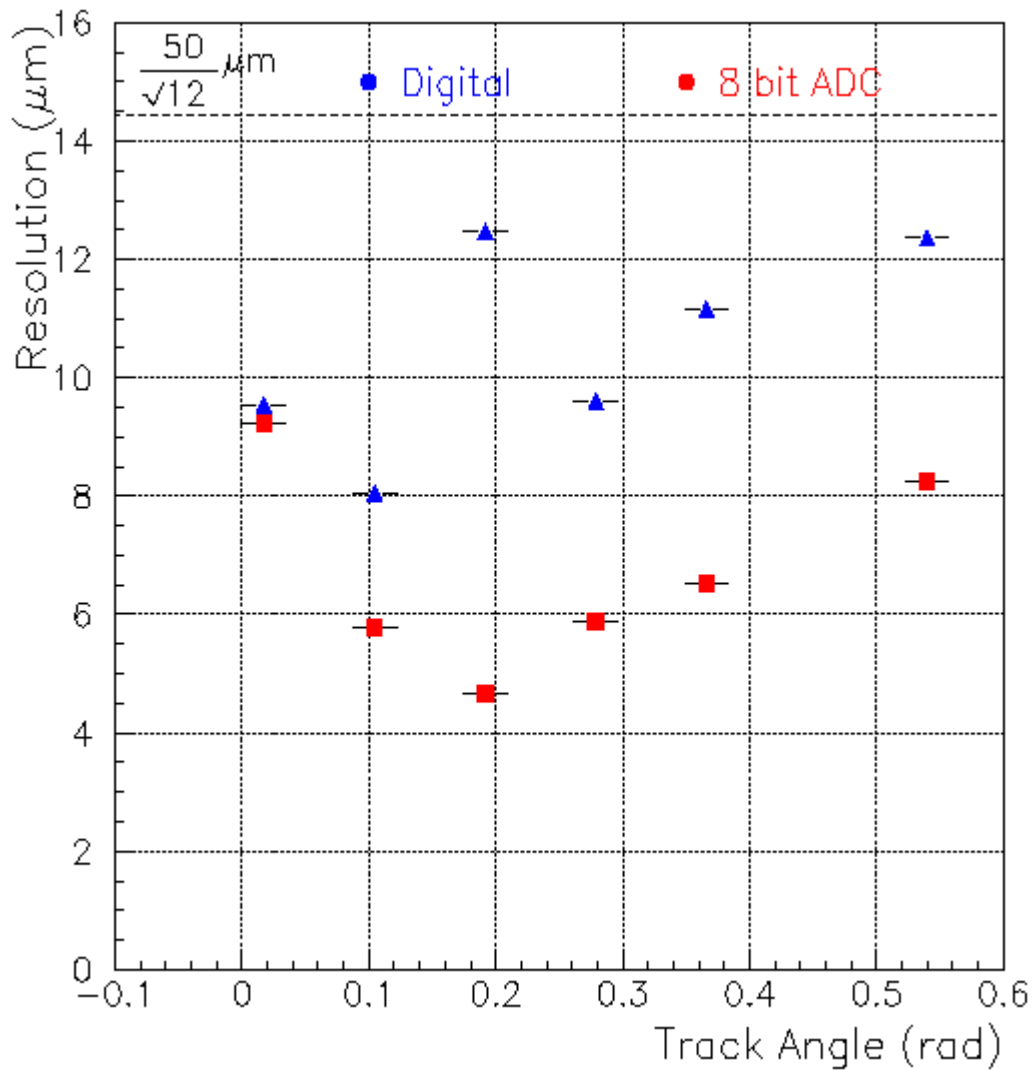
Results: spatial resolution

Spatial resolution vs angle

Good spatial resolution at all angles

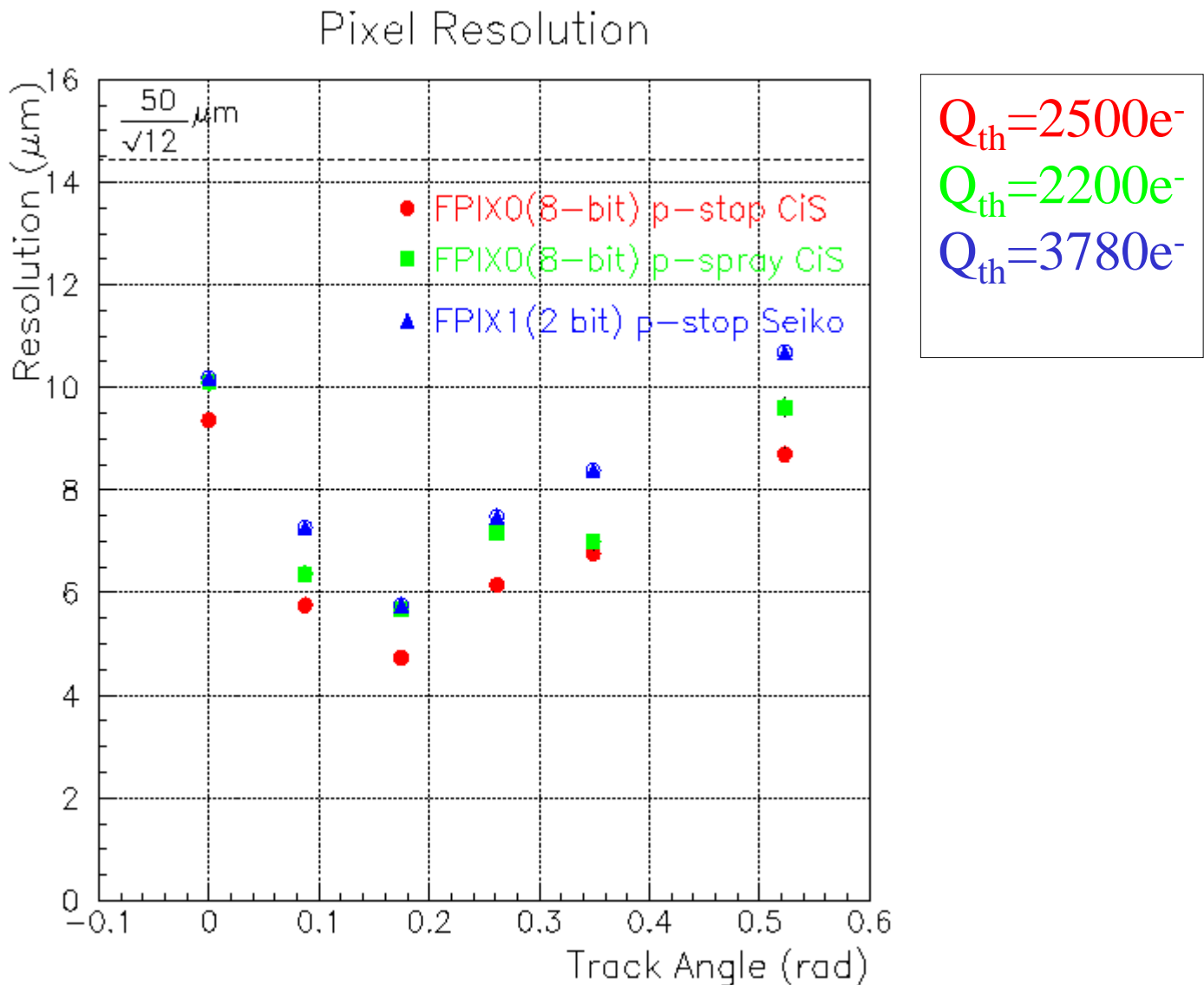
ST1 CiS FPIX0 detector

$Q_{th} = 2500e^-$ $V_{bias} = 140V$



Results: spatial resolution

Comparison between detectors



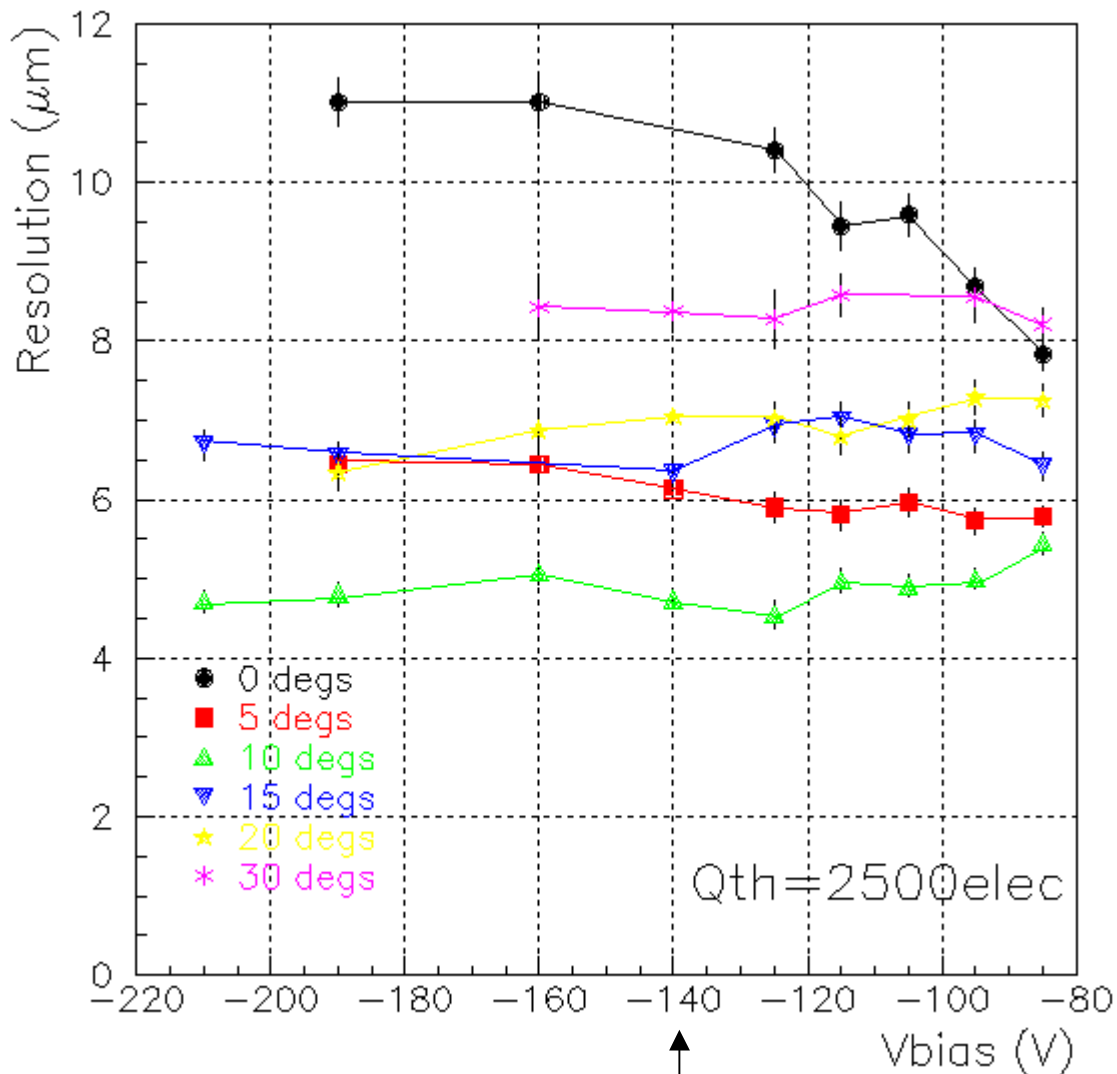
- Most of the difference in spatial resolution between FPIX0 (8 bit) and FPIX1(2 bit) is due to the different readout threshold.
- The charge losses degrades the spatial resolution

Results: spatial resolution

Bias voltage

For track angle > 5 degrees no degradation of the resolution when the detector is over depleted.

ST1 CiS FPIX0 detector



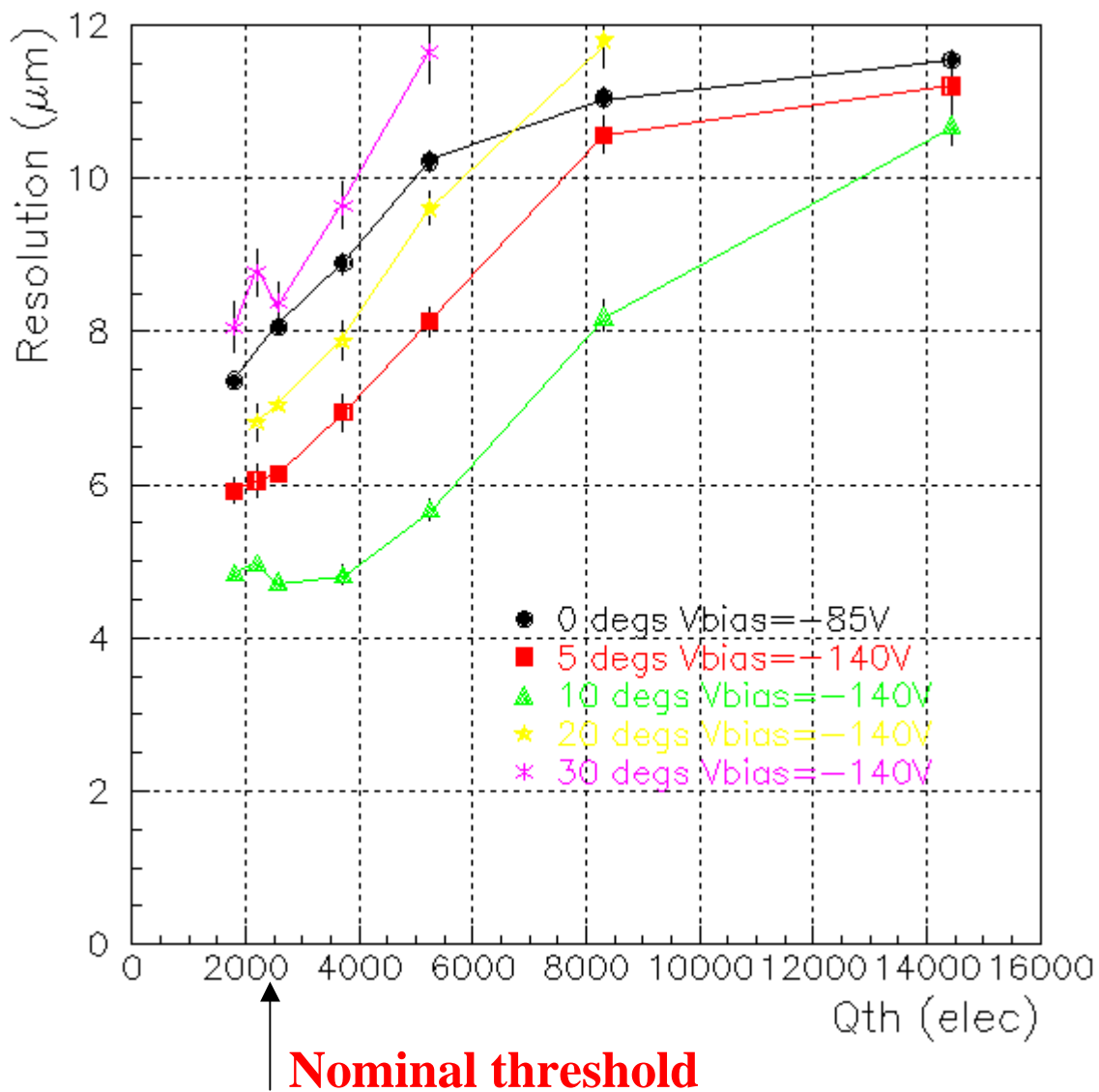
Nominal bias voltage

Results: spatial resolution

Threshold

As expected, larger readout threshold degrades the spatial resolution.

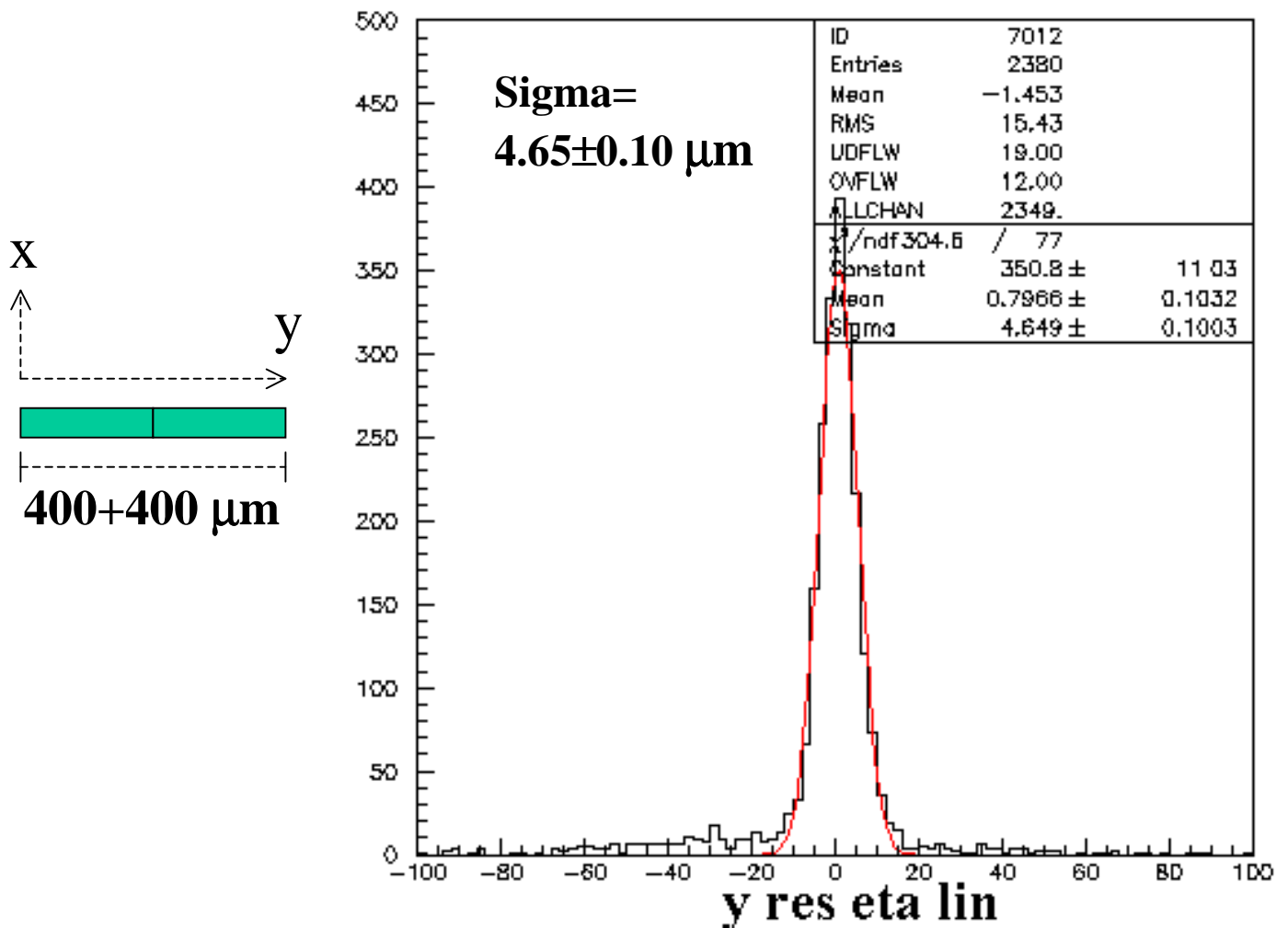
ST1 CiS FPIX0 detector



Results: spatial resolution

2D spatial resolution

ST1 CiS FPIX0 detector

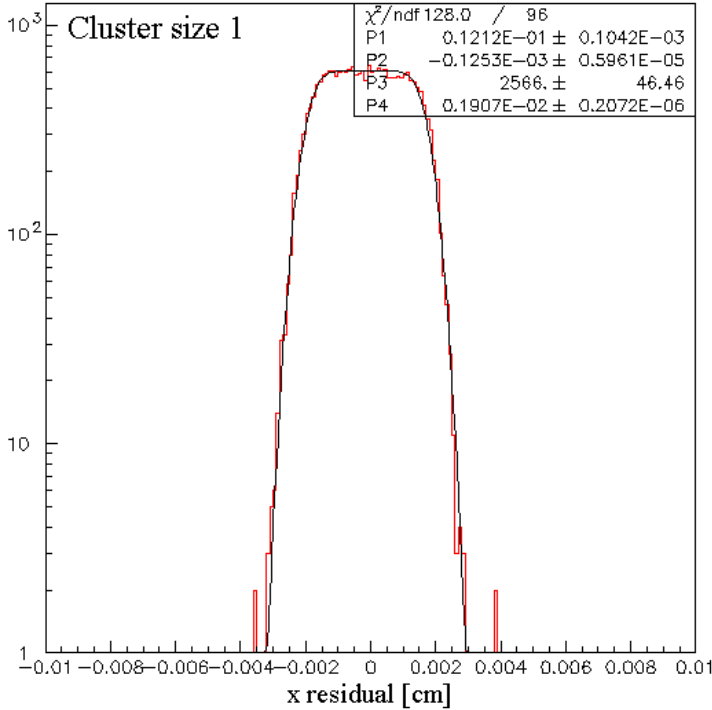


Good spatial resolution also when the charge is shared between the long pixel dimension.

Results: spatial resolution

Non-Gaussian resolution function

FPIX0 p-spray 0 degs

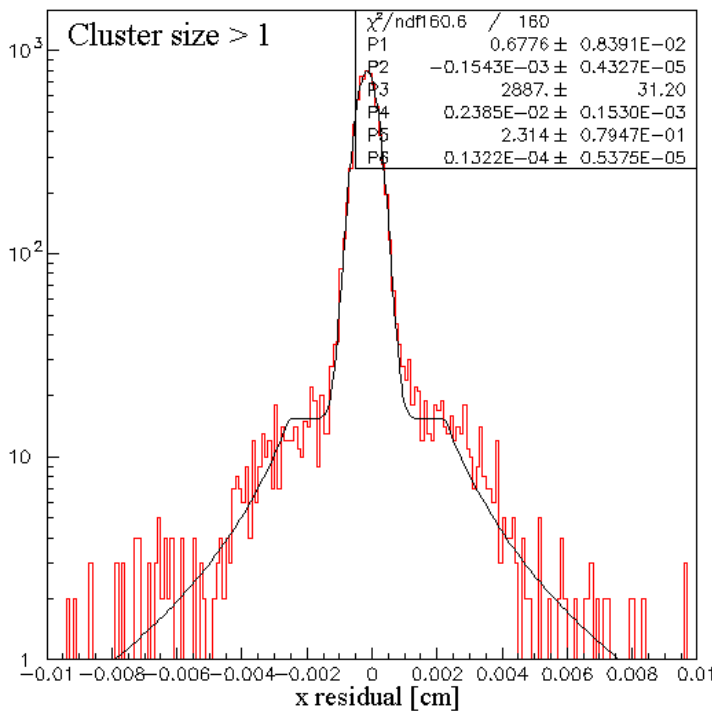


CS=1 and track angle < 10 degs:
Square convoluted with a Gaussian

$$F_{bg}(x) = \int_{-w_p}^{w_p} dt \frac{A_{bg}}{\sqrt{2\pi\sigma_W}} e^{-\frac{(t-x)^2}{2\sigma_W}}$$

CS>1 track angle < 10 degs
and all CS track angle > 10 degs:
Gaussian + power law

$$F(x) = F_{Gauss}(x) + F_{pl}(x)$$



$$F_{pl}(x) = \begin{cases} \frac{A_{pl}}{|r_{cut-off}|^\gamma} & |x| < r_{cut-off} \\ \frac{A_{pl}}{|x|^\gamma} & |x| > r_{cut-off} \end{cases}$$

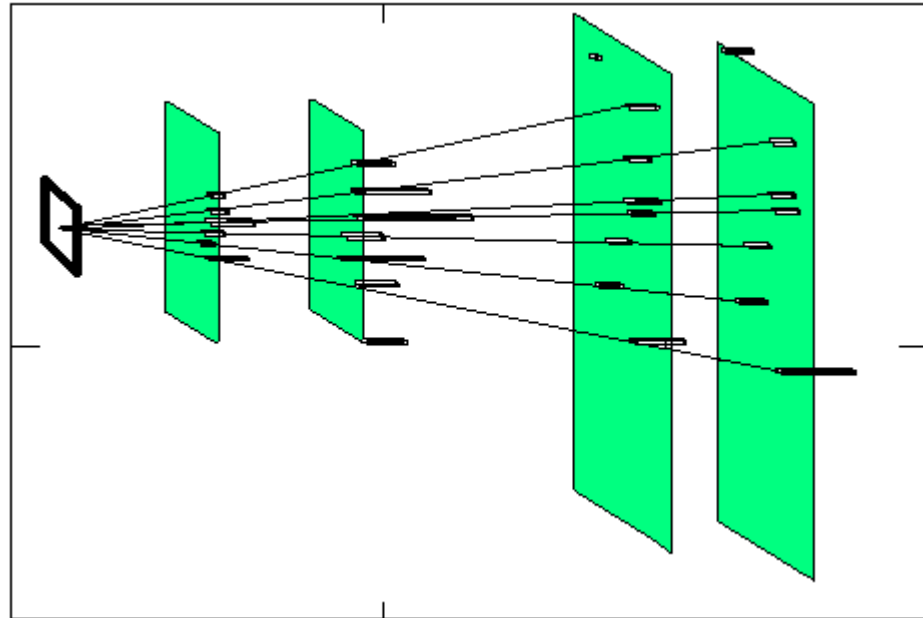
Non-Gaussian part:

- 15% of events: half in the constant term and half in the tails
- power law with an exponent ≥ 2

Four plane pixel telescope

Run: 7358 Event: 136

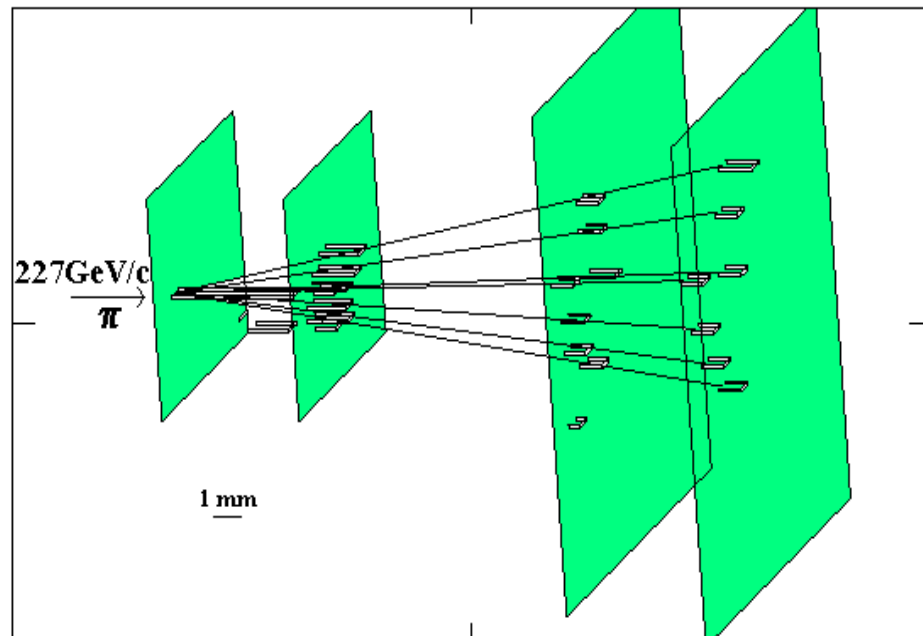
2.2mm thick
diamond target



Interaction vertex in the target

Run: 7358 Event: 478

Thousands
of triggered
multiple
interactions
events



Interaction vertex in pixel plane

Conclusions

- The **FPIX-type FE** performs well as expected and needed
- **GREAT data sample** to gain operational experience with pixel silicon detectors (**3M useful events**)
- Primary features of results are clear:
 - Very **good resolution** at all angles
 - Little sensitivity to the **bias voltage**
 - Excellent **tracking capability**