

Geant 4

Detector Description - Basics

Anton Lechner, CERN

Acknowledgements:

Slides produced by J. Apostolakis, G. Cosmo, M. Asai, A. Howard

<http://cern.ch/geant4>

Introduction

Basic concepts of setting up a detector geometry

Detector Description

- Derive your own concrete class from the `G4VUserDetectorConstruction` abstract base class.
- Implementing the method `Construct()`:
 - Modularize it according to each detector component or sub-detector:
 - Construct all necessary materials
 - Define shapes/solids required to describe the geometry
 - Construct and place volumes of your detector geometry
 - Define sensitive detectors and identify detector volumes which to associate them (optional)
 - Associate magnetic field to detector regions (optional)
 - Define visualization attributes for the detector elements (optional)
 - Define regions (optional)

Example:

```
G4VUserDetectorConstruction {  
public:  
    virtual G4VPhysicalVolume* Construct() = 0;  
    ...  
};
```

pure virtual method

// header file: MyDetectorConstruction.hh

```
#include "G4VUserDetectorConstruction.hh"
```

```
class MyDetectorConstruction : public G4VUserDetectorConstruction {
```

```
public:
```

```
...
```

```
    G4VPhysicalVolume* Construct(); // Construct() must return the pointer of  
                                     // the world physical volume
```

```
    ...  
};
```

// source file: MyDetectorConstruction.cc

```
G4VPhysicalVolume* MyDetectorConstruction::Construct() {
```

```
    ...  
    // Setup your detector here (as shown in the following)  
}
```

Example (cont.):

// main() of your Geant4 application:

```
#include "G4RunManager.hh"  
#include "MyDetectorConstruction.hh"
```

... // other header files

obligatory initialization class

```
int main() {
```

```
G4RunManager* runManager = new G4RunManager;
```

```
G4VUserDetectorConstruction* detector = new MyDetectorConstruction();
```

```
runManager -> SetUserInitialization(detector);
```

*... // instantiate other obligatory initialization (G4VUserPhysicsList) and action
// classes (G4VUserPrimaryGeneratorAction) and assign them to run manag.*

*... // instantiate other optional action classes (G4UserRunAction,
// G4UserEventAction, G4UserStackingAction, G4UserSteppingAction,
// G4UserTrackingAction) and assign them to run manager*

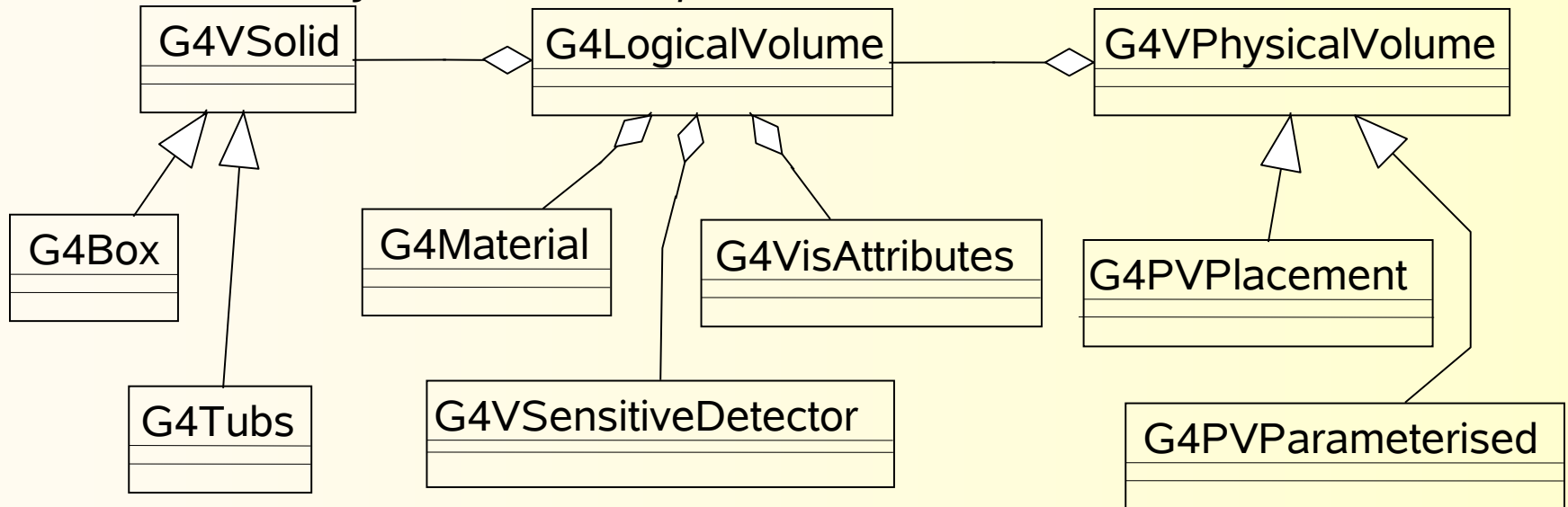
```
}
```

Creating a Detector Volume

- Start with its Shape & Size
 - Box 3x5x7 cm, sphere R=8m
 - Add properties:
 - material, B/E field,
 - make it sensitive
 - Place it in another volume
 - in one place
 - repeatedly using a function
- *Solid*
 - *Logical-Volume*
 - *Physical-Volume*

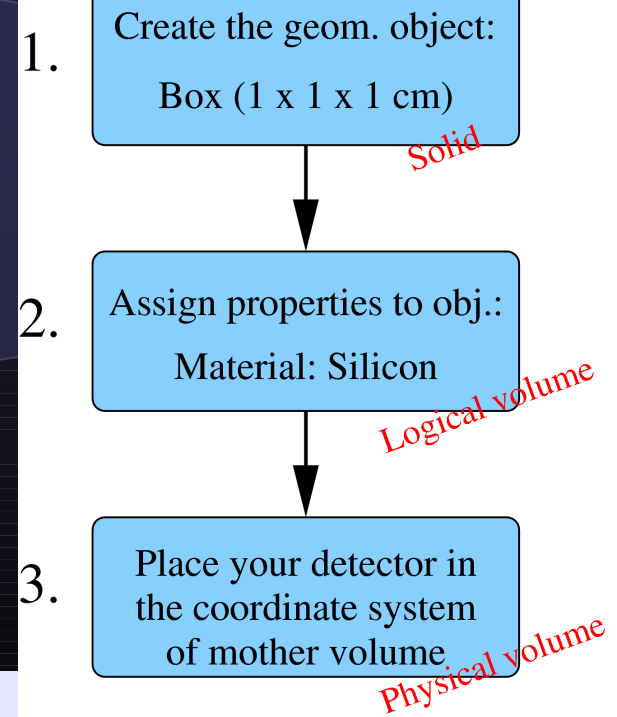
Defining the Detector Geometry

- Three conceptual layers:
 - **G4VSolid** -- *shape, size*
 - **G4LogicalVolume** -- *daughter physical volumes, material, sensitivity, user limits, etc.*
 - **G4VPhysicalVolume** -- *position, rotation*



Example:

- Assume, your detector is a cube
 - size: 1 x 1 x 1 cm
 - material: silicon



```
G4VSolid* boxSolid = new G4Box( "aBoxSolid", 1.0 * cm, 1.0 * cm, 1.0 * cm);
```

```
G4LogicalVolume* boxLog =  
new G4LogicalVolume( boxSolid, matSilicon, "aBoxLog", 0, 0, 0);
```

create a material as shown in the previous presentation

```
G4VPhysicalVolume* boxPhys =  
new G4PVPlacement( rotation, G4ThreeVector(posX, posY, posZ), boxLog,  
"aBoxPhys", motherLog, 0, copyNo);
```

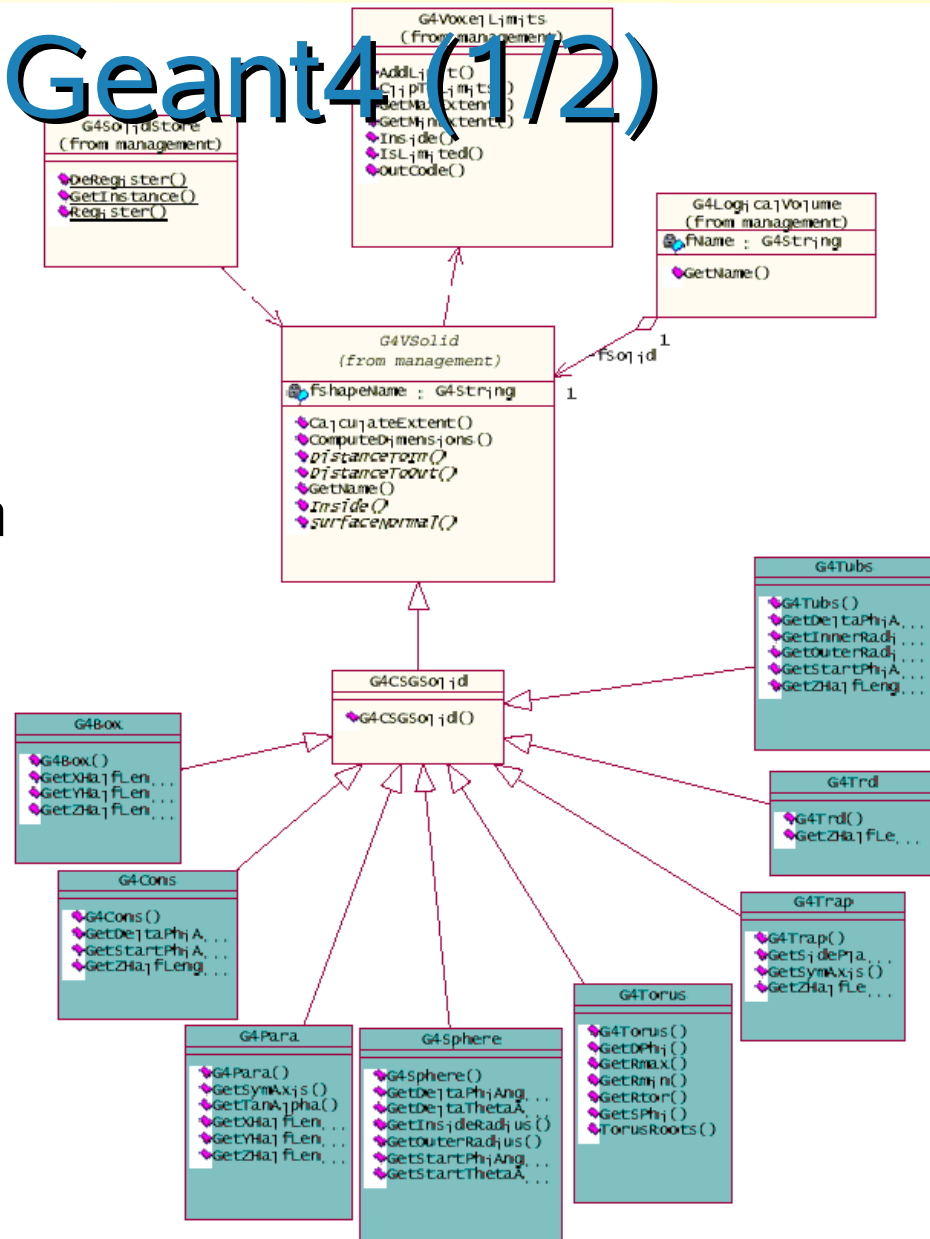


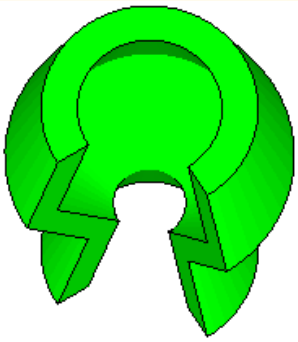

Solids

Geometrical objects

Solids in Geant4 (1/2)

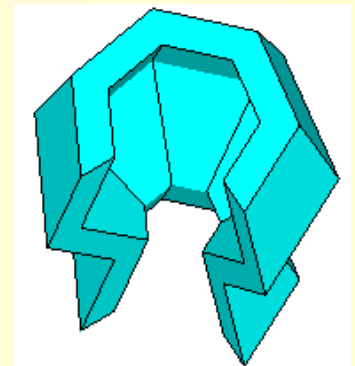
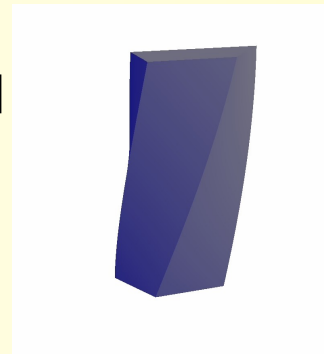
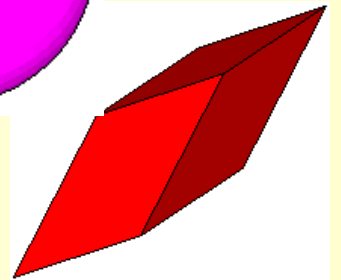
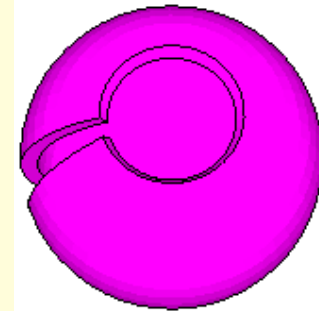
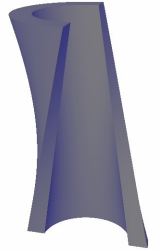
- All solids derive from the abstract base class G4VSolid
- Once constructed, each solid is automatically registered in a specific solid store





Solids in Geant4 (2/2)

- **CSG** (Constructed Solid Geometry):
 - G4Box, G4Tubs, G4Cons, G4Trd, ...
 - Analogous to simple G3 CSG solids
- **Specific solids** (CSG like):
 - G4Polycone, G4Polyhedra, G4Hype, ...
 - G4TwistedTubs, G4TwistedTrap,...
- **BREP** (Boundary REPresented) and **Boolean solids**
 - See presentation on advanced geometries



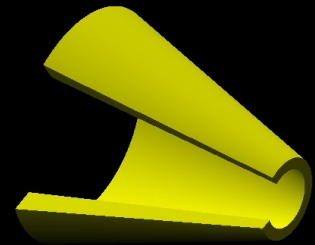
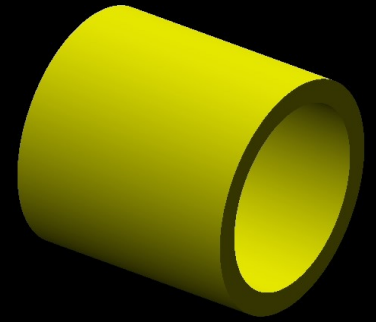
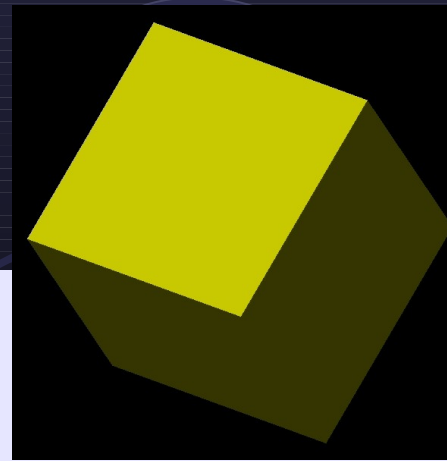
Examples (CSG):

```
G4VSolid* boxSolid =  
  new G4Box( "aBoxSolid",  
            1.0 * cm, 1.0 * cm, 1.0 * cm);
```

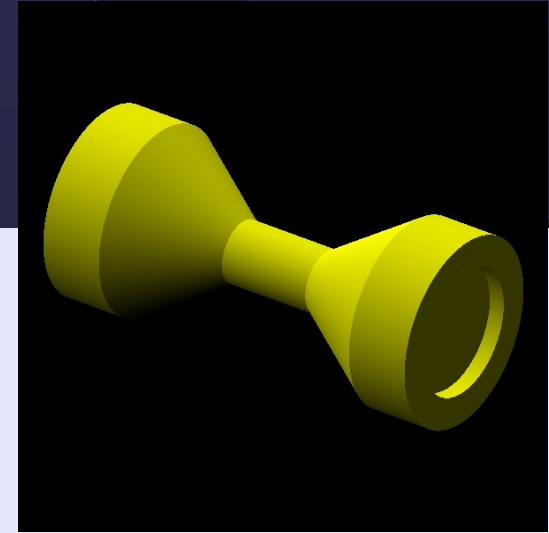
```
G4VSolid* tubeSolid =  
  new G4Tubs("aTubeSolid",  
            1.6 * cm, // inner radius  
            2.0 * cm, // outer radius  
            2.0 * cm, // height  
            0.0 * deg, 360.0 * deg); // segment angles
```

```
G4VSolid* coneSolid =  
  new G4Cons( "aConeSolid",  
            0.5 * cm, 0.7 * cm, // inner & outer radius 1  
            1.6 * cm, 2.0 * cm, // inner & outer radius 2  
            2.0 * cm, // height  
            0.0 * deg, 285. *deg); // segment angles
```

```
G4VSolid* sphereSolid =  
  new G4Sphere("aSphereSolid",  
            1.6 * cm, 2.0 * cm, // inner & outer radius  
            0.0 * deg, 270.0 *deg, // segment angles phi  
            0.0 * deg, 100.0 *deg); // segment angles theta
```



Example (specific CSG):



```
G4int nmbRZ = 10;
```

```
G4double r[] = {0.0 * mm, 2.0 * mm, 2.0 * mm, 3.0 * mm, 3.0 * mm,  
1.0 * mm, 1.0 * mm, 3.0 * mm, 3.0 * mm, 0.0 * mm};
```

```
G4double z[] = {0.5 * mm, 0.5 * mm, 0.0 * mm, 0.0 * mm, 2.0 * mm,  
5.0 * mm, 8.0 * mm, 11.0 * mm, 13 * mm, 13.0 * mm};
```

```
G4VSolid* polyconeSolid =  
  new G4Polycone("aPolyconeSolid",  
    0.0 * deg, // start angle phi  
    360.0 * deg, // total angle phi  
    nmbRZ, // Numbers of corners in the r,z space  
    r, // r-coordinates of corners  
    z); // z-coordinates of corners
```

Logical Volumes

Volumes with attributes: Material, Sensitivity, ...

Logical Volumes (1/2)

- A logical volume contains all information of the volume except position and rotation:
 - Shape and dimension (G4VSolid)
 - Material, sensitivity, visualization attributes
 - Magnetic field, User Limits
 - Shower parameterisation
 - Position of daughter volumes
 - Region
- Physical volumes of the same type can share a logical volume

Logical Volumes (2/2)

- To create a logical volume for a given **material** and **solid**, the user must instantiate **G4LogicalVolume**:

```
G4LogicalVolume(G4VSolid* pSolid,  
                G4Material* pMaterial,  
                const G4String& name,  
                G4FieldManager* pFieldMgr=0,  
                G4VSensitiveDetector* pSDetector=0,  
                G4UserLimits* pULimits=0,  
                G4bool optimise=true);
```

- Note:
 - The pointers to solid and material must be NOT null
 - Once created it is automatically entered in the LV store
 - It is not meant to act as a base class



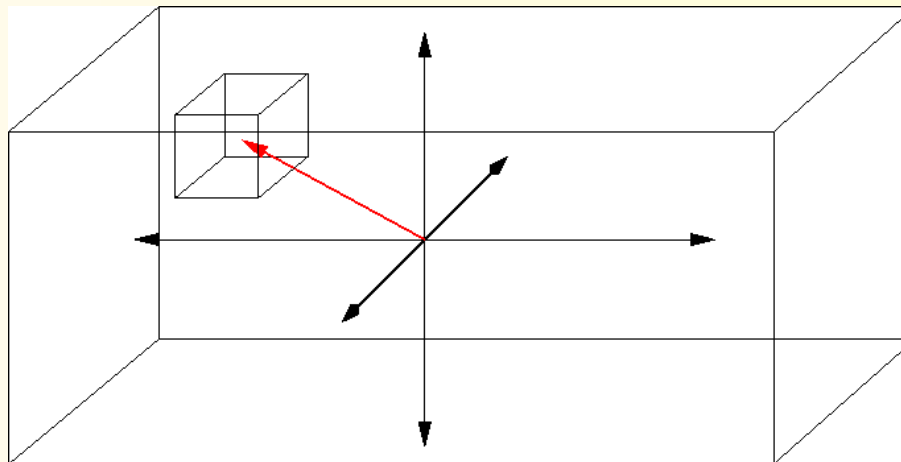
Physical Volumes

Placing Logical Volumes

- Physical volumes are placed instances of logical volumes
 - One logical volume can be placed more than once
 - Several techniques can be used:
 - Single placement
 - Repeated placement (Replicas, parametrization, ...)
 - Volumes are part of a geometrical hierarchy:
 - Volumes always have a mother volume (except the root volume)
 - Volumes may have several daughter volumes
- G4VPhysicalVolume is the base class of physical volumes
 - Use the inherited classes to place your logical volumes

Geometrical hierarchy (1/2)

- Mother and daughter volumes
 - A volume is placed in its mother volume
 - Position and rotation of the daughter volume is described with respect to the **local coordinate system of the mother volume**
 - The **origin** of the mother's local coordinate system is at the **center of the mother volume**
 - Daughter volumes cannot protrude from the mother volume
 - One or more volumes can be placed to a mother volume

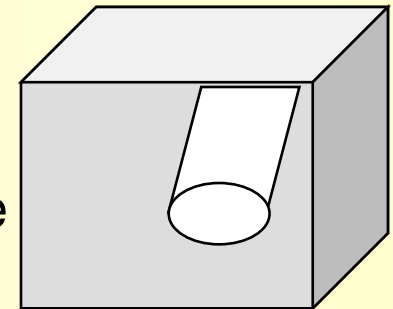


Geometrical hierarchy (2/2)

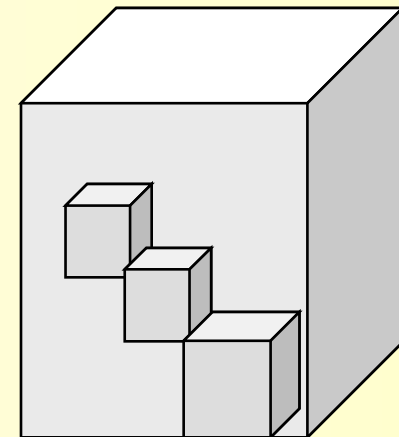
- Mother and daughter volumes (cont.)
 - The *logical volume* of the mother knows the physical volumes it contains
 - It is *uniquely* defined to be their mother volume
 - If the logical volume of the mother is placed more than once, all daughters appear by definition in all these physical instances of the mother
- World volume = root volume of the hierarchy
 - The world volume must be a *unique physical volume* which *fully contains all other volumes*
 - The world defines the *global coordinate system*
 - The origin of the global coordinate system is at the center of the world volume
 - The position of a track is given with respect to the global coordinate system
 - The most simple shape to describe the world is a box

Physical Volumes

- **Placement:** *it is one positioned volume*
 - One physical volume represents one “real” volume
- **Repeated:** *a volume placed many times*
 - On physical volume represents any number of “real” volumes
 - reduces use of memory
 - Replica and Division
 - simple repetition along one axis
 - Parameterised
 - repetition with respect to copy number
- A **mother** volume can contain **either**
 - **many placement** volumes OR
 - **one repeated** volume



placement



repeated

G4VPhysicalVolume

- **G4PVPlacement** 1 Placement = One Volume
 - A volume instance positioned once in a mother volume
- **G4PVParameterised** 1 Parameterised = Many Volumes
 - Parameterised by the copy number
 - Shape, size, material, position and rotation can be parameterised, by implementing a concrete class of G4VPVParameterisation.
 - Reduction of memory consumption
 - Currently: parameterisation can be used only for volumes that either a) have no further daughters or b) are identical in size & shape.
- **G4PVReplica** 1 Replica = Many Volumes
 - Slicing a volume into smaller pieces (if it has a symmetry)

Single Physical Volume (1/2)

- To place a single instance of a logical volume in a mother volume use `G4PVPlacement`:

```
G4PVPlacement(G4RotationMatrix* pRot,  
              const G4ThreeVector& tlate,  
              G4LogicalVolume* pCurrentLogical,  
              const G4String& pName,  
              G4LogicalVolume* pMotherLogical,  
              G4bool pMany,  
              G4int pCopyNo);
```

- The volume is positioned in a frame, which is rotated and translated relative to the mother volume

Single Physical Volume (2/2)

- Alternative constructor for G4PVPlacement: Use G4Transform3D to represent the **direct rotation and translation** of the solid instead of the frame

```
G4PVPlacement(G4Transform3D(G4RotationMatrix& pRot,  
                             const G4ThreeVector& tlate),  
              G4LogicalVolume* pCurrentLogical,  
              const G4String& pName,  
              G4LogicalVolume* pMotherLogical,  
              G4bool pMany,  
              G4int pCopyNo);
```

- Two additional constructors are available:
 - Same arguments as for the two previous constructors, except that you can specify the mother volume by its **pointer to the physical volume instead of its logical volume**

Example:

```
G4RotationMatrix* yRot = new G4RotationMatrix; // Rotates X and Z axes only  
yRot -> rotateY(M_PI/4.*rad); // Rotates 45 degrees
```

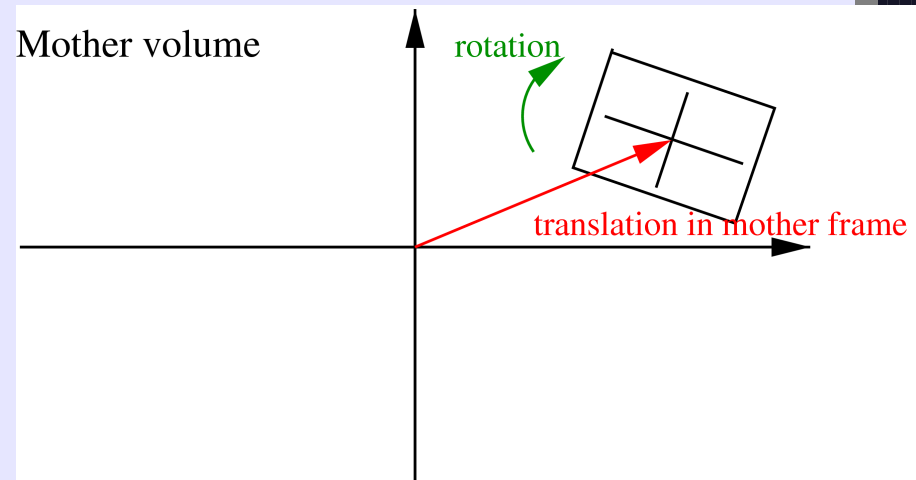
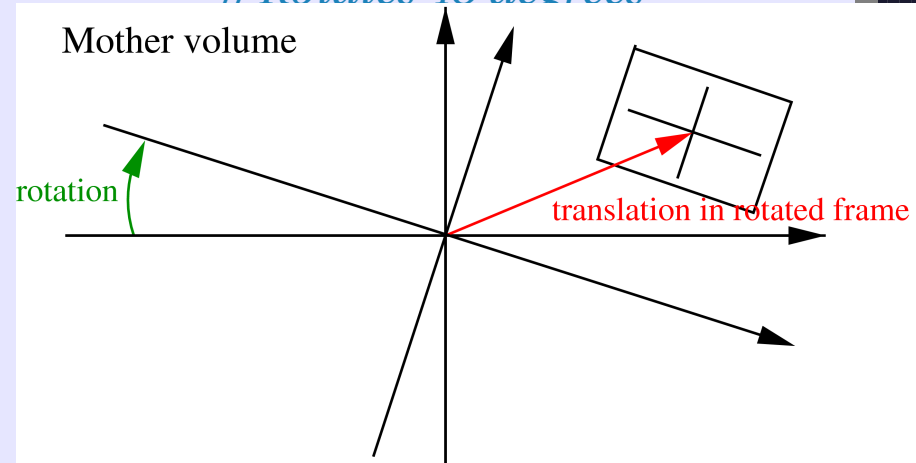
```
G4ThreeVector zTrans(0, 0, 5 * cm);
```

// Constructor 1:

```
G4VPhysicalVolume* boxPhys =  
    new G4PVPlacement(yRot, zTrans,  
                      boxLog,  
                      "aBoxPhys",  
                      motherLog,  
                      0, copyNo);
```

// Constructor 2:

```
G4VPhysicalVolume* boxPhys =  
    new G4PVPlacement(  
        G4Transform3D(*yRot, zTrans),  
        boxLog,  
        "aBoxPhys",  
        motherLog,  
        0, copyNo);
```



Parameter. Physical Volume

- Using G4PVPParameterised, one can place a logical volume multiple times, where position and dimension are parametrised w.r.t. the copy number:

```
G4PVPParameterised( const G4String& pName,  
                    G4LogicalVolume* pCurrentLogical,  
                    G4LogicalVolume* pMotherLogical,  
                    const EAxis pAxis,  
                    const G4int nReplicas,  
                    G4VPVParameterisation* pParam);
```

- Note:

- Replicates the volume nReplicas times (nReplicas touchables differing in position and size).
- The positioning of the replicas is dominant along the specified Cartesian axis (if kUndefined is used, 3D voxelisation for optimisation of the geometry is adopted).

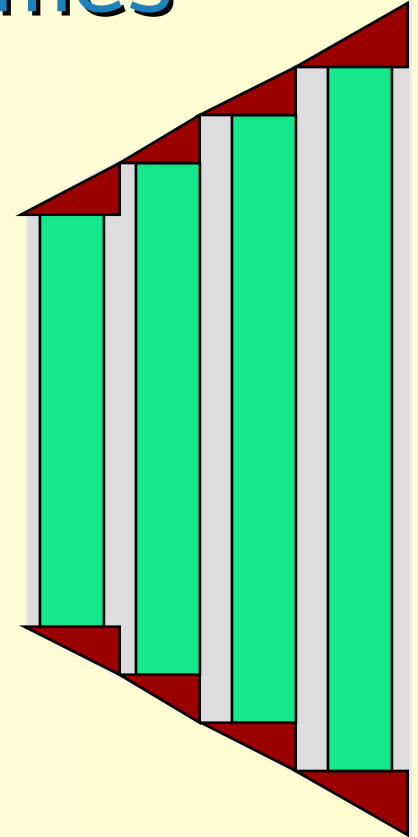
see next page

Parameter. Physical Volume

- The dimension and position of a replica for a given copy number are calculated by means of the concrete user implementation of G4VPVParameterisation:
 - The user must implement the methods:
 - ComputeDimensions() (for calculating the dimensions)
 - ComputeTransformations() (for calculating the position)
 - Optional methods are:
 - ComputeSolid() (for the type of solid)
 - ComputeMaterial() (for the material)
- Limitations:
 - For simple CSG solids only
 - Daughter volumes only allowed in special cases

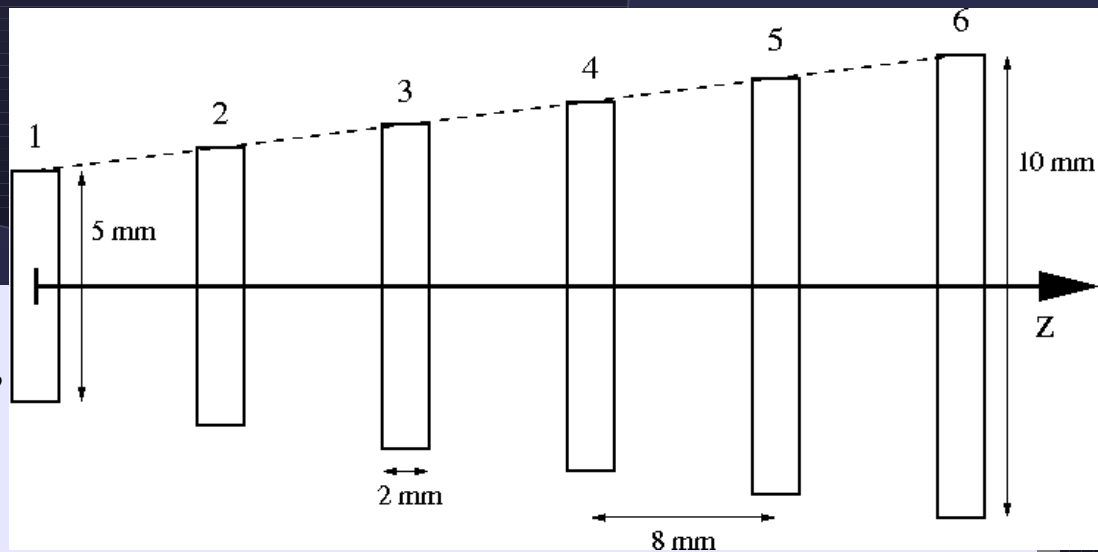
Uses of Parameterised Volumes

- Complex detectors
 - with large repetition of volumes
 - regular or irregular
- Medical applications
 - the material in animal tissue is measured
 - cubes with varying material



Example:

```
G4VSolid* chamberSolid =  
  new G4Box( "chamberSolid",  
    1. * cm,  
    1. * cm,  
    1. * cm);
```



```
G4LogicalVolume* chamberLog =  
  new G4LogicalVolume(chamberSolid, chamberMat, "chamberLog",0,0,0);
```

```
G4VPVParameterisation* chamberParam =  
  new ChamberParameterisation(6,           // Number of chambers  
    0.0 * mm, // Z of centre of first  
    8.0 * mm, // Z spacing of centres  
    2.0 * mm, // Width chamber  
    5.0 * mm, // length first chamber  
    10.0 * mm); // length last chamber
```

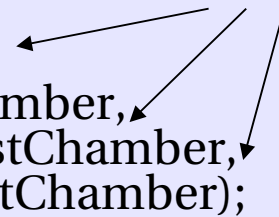
User defined class, see next slide

```
G4VPhysicalVolume* chamberPhys =  
  new G4PVPParameterised("chamber", chamberLog, motherLog,  
    kZAxis,  
    6,           // Number of chambers  
    chamberParam);
```

Example:

```
class ChamberParameterisation : public G4VPVParameterisation {  
public:  
    ChamberParameterisation(G4int NoChambers,  
                             G4double startZ,  
                             G4double spacingZ,  
                             G4double widthChamber,  
                             G4double lengthFirstChamber,  
                             G4double lengthLastChamber);  
    ~ChamberParameterisation();  
  
    void ComputeTransformation(const G4int copyNo,  
                              G4VPhysicalVolume* physVol) const;  
  
    void ComputeDimension(G4Box& chamber,  
                          const G4int copyNo  
                          const G4VPhysicalVolume* physVol) const;  
  
private:  
    ... // data members  
};
```

*Values initialize corresp.
data members, which are
used in the Compute...
methods*



Example:

```
void ChamberParameterisation::ComputeTransformation(  
    const G4int copyNo,  
    G4VPhysicalVolume* physVol) const {  
  
    G4double positionZ = fStartZ + (copyNo + 1) * fSpacingZ;  
    G4ThreeVector origin(0, 0, positionZ);  
    physVol -> SetTranslation(origin);  
    physVol -> SetRotation(0);  
}
```

```
void ChamberParameterisation::ComputeDimension(  
    G4Box& chamber,  
    const G4int copyNo,  
    const G4VPhysicalVolume* physVol) const{  
  
    G4double fLengthChamber = fLengthFirstChamber + copyNo *  
        ((fLengthLastChamber - fLengthFirstChamber) / fNoChambers);  
  
    chamber.SetXHalfLength(fLengthChamber * 0.5);  
    chamber.SetYHalfLength(fLengthChamber * 0.5);  
    chamber.SetZHalfLength(fWidthChamber * 0.5);  
}
```

