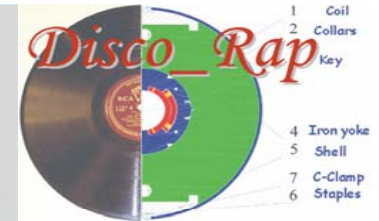


THE TECHNICAL DESIGN REVIEW OF THE SUPERCONDUCTING MODEL DIPOLE FOR FAIR SIS300

PLANNING AND ORGANIZATION

P.Fabbricatore
INFN Genova

THE TECHNICAL DESIGN REVIEW OF THE SUPERCONDUCTING MODEL DIPOLE FOR FAIR SIS300



The INFN groups

Since 2005 the INFN groups working in applied superconductivity expressed a strong interest in developing the fast cycled superconducting dipole for SIS300.

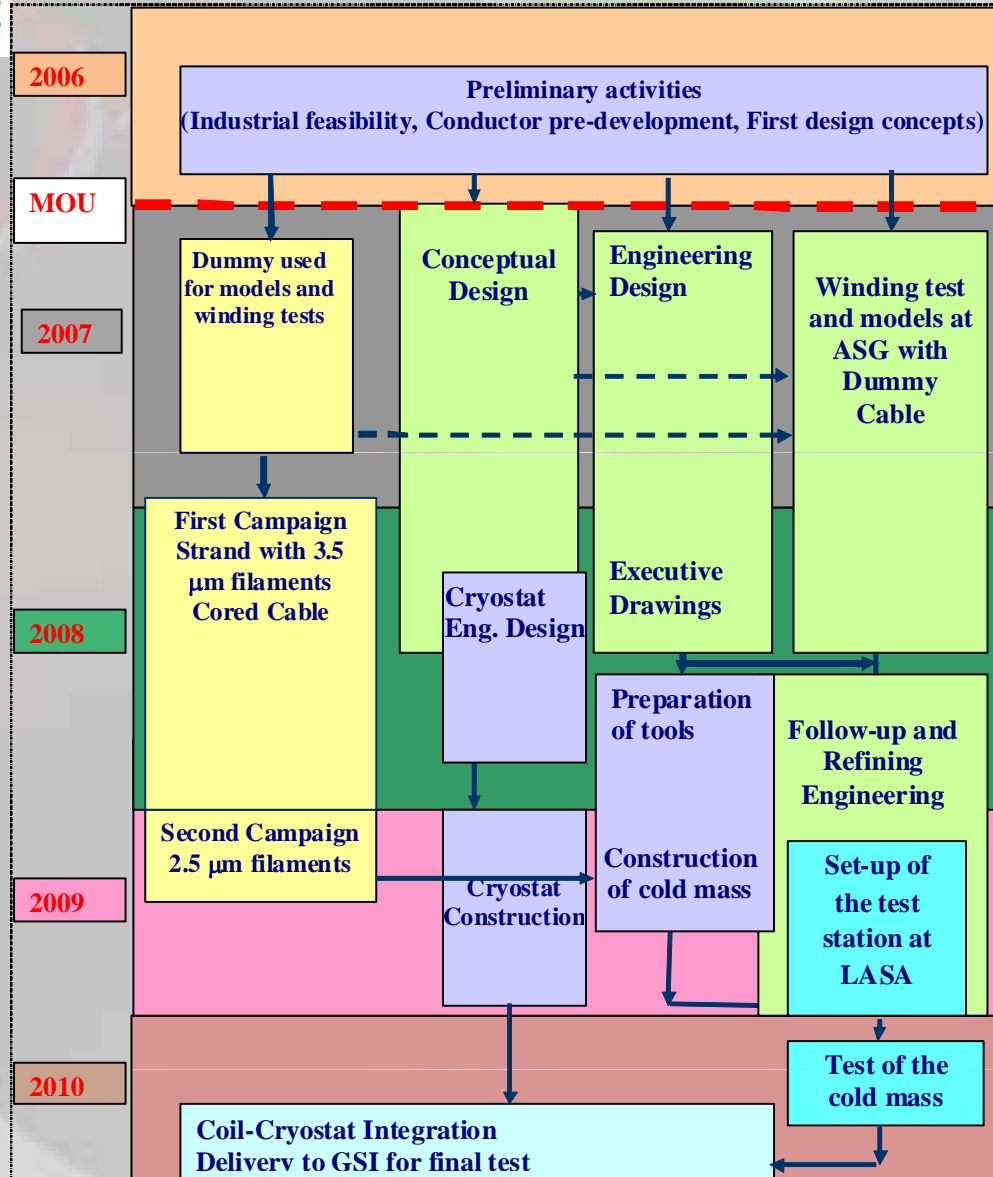
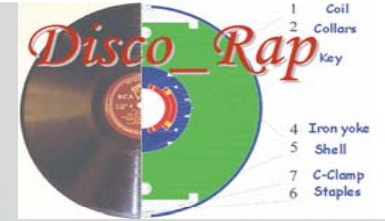
These groups, located in Frascati, Genova and Milano-LASA, were coming from large commitments in the design and construction of superconducting magnets.

Manpower involved 10 FTE/year

+ ASG Superconductors

Under INFN contracts but in a framework of a collaboration. Of fundamental importance their know-how acquired with LHC dipole construction

THE TECHNICAL DESIGN REVIEW OF THE SUPERCONDUCTING MODEL DIPOLE FOR FAIR SIS300



Preliminary activities

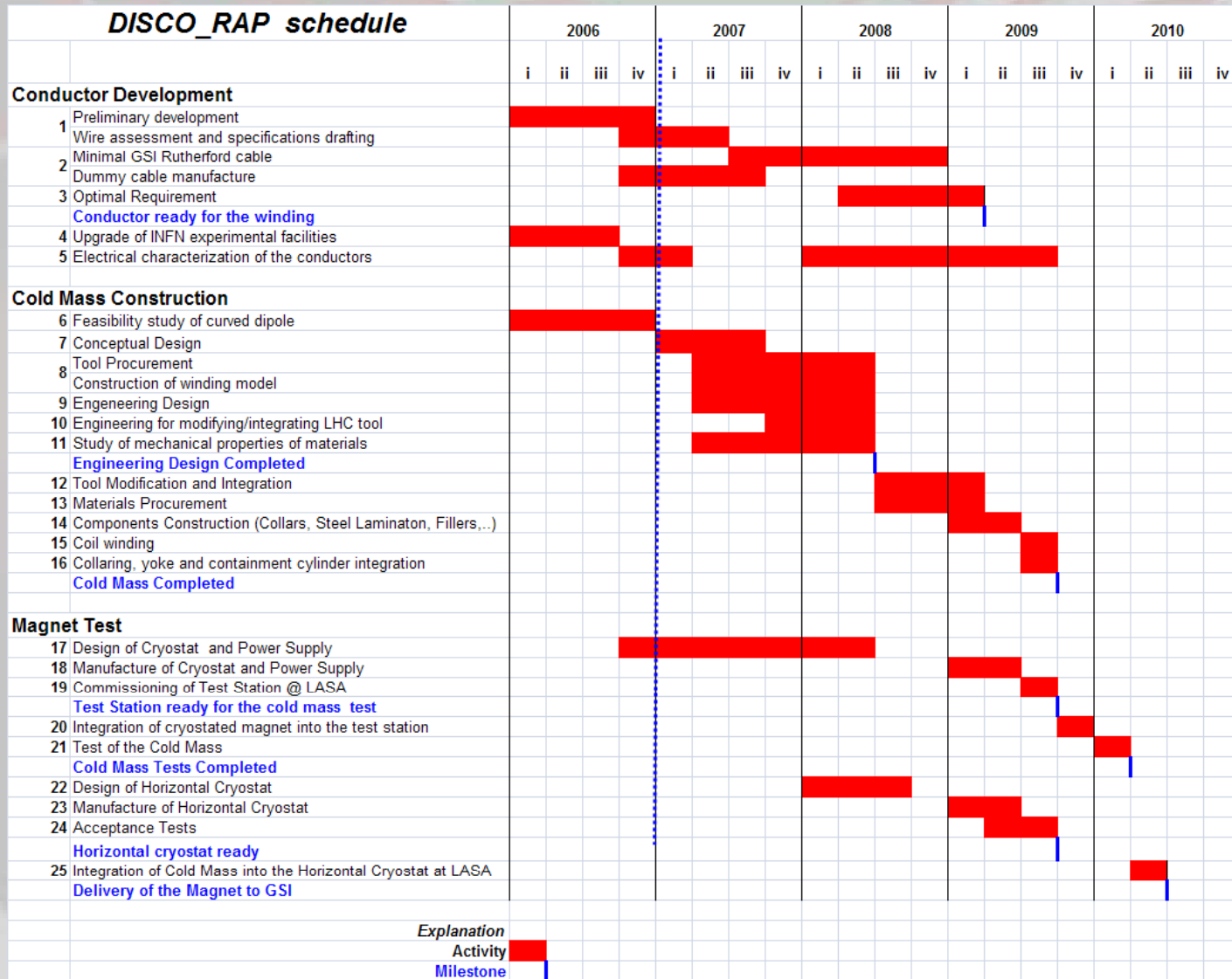
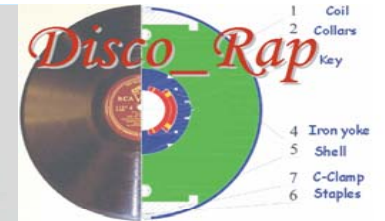
Design

Design + Winding Models

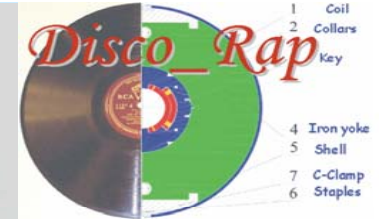
Construction

Tests at LASA

THE TECHNICAL DESIGN REVIEW OF THE SUPERCONDUCTING MODEL DIPOLE FOR FAIR SIS300



THE TECHNICAL DESIGN REVIEW OF THE SUPERCONDUCTING MODEL DIPOLE FOR FAIR SIS300



Design Phase

Conceptual and Engineering Design, Industrial Developments, Measurements and Tests

Technical Design Report for the Model Dipole

Model
Construction

Tests on the
model

Refinements of some
design aspects

Follow-up
Engineering

Technical Design Report for the
construction of the prototypes for
SIS300